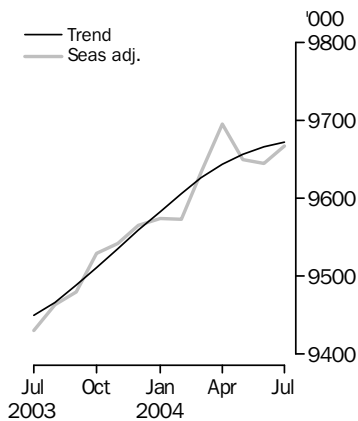


LABOUR FORCE

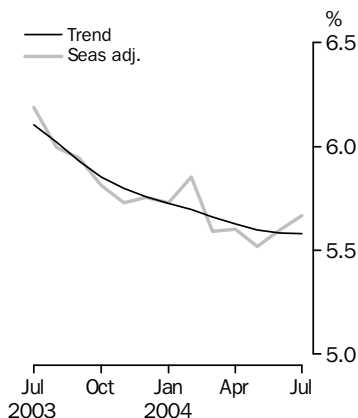
AUSTRALIA

EMBARGO: 11.30AM (CANBERRA TIME) THURS 12 AUG 2004

Employed Persons



Unemployment rate



KEY FIGURES

	Jun 2004	Jul 2004	Jun 04 to Jul 04	Jul 03 to Jul 04
Trend				
Employed persons ('000)	9 666.3	9 672.2	5.8	2.4 %
Unemployed persons ('000)	571.9	571.7	-0.2	-7.0 %
Unemployment rate (%)	5.6	5.6	0.0 pts	-0.5 pts
Participation rate (%)	63.6	63.6	0.0 pts	0.2 pts
Seasonally Adjusted				
Employed persons ('000)	9 645.4	9 666.9	21.6	2.5 %
Unemployed persons ('000)	572.0	580.8	8.8	-6.6 %
Unemployment rate (%)	5.6	5.7	0.1 pts	-0.5 pts
Participation rate (%)	63.5	63.6	0.1 pts	0.2 pts

KEY POINTS

TREND ESTIMATES (MONTHLY CHANGE)

- EMPLOYMENT increased to 9,672,200.
- UNEMPLOYMENT decreased to 571,700
- UNEMPLOYMENT RATE remained at 5.6%.
- PARTICIPATION RATE remained at 63.6%.

SEASONALLY ADJUSTED ESTIMATES (MONTHLY CHANGE)

EMPLOYMENT

- increased by 21,600 to 9,666,900. Full-time employment remained at 6,933,900 while part-time employment increased by 21,600 to 2,733,000.

UNEMPLOYMENT

- increased by 8,800 to 580,800. The number of persons looking for full-time work increased by 12,800 to 428,200 and the number of persons looking for part-time work decreased by 4,000 to 152,600.

UNEMPLOYMENT RATE

- increased by 0.1 percentage point to 5.7%. The male unemployment rate decreased by 0.1 percentage point to 5.5% and the female unemployment rate increased by 0.3 percentage points to 5.9%.

PARTICIPATION RATE

- increased by 0.1 percentage point to 63.6%.

INQUIRIES

- For further information about these and related statistics, contact the National Information and Referral Service on 1300 135 070 or Craig Blair on Canberra (02) 6252 6525.

NOTES

FORTHCOMING ISSUES

<i>ISSUE</i>	<i>RELEASE DATE</i>
August 2004	9 September 2004
September 2004	7 October 2004
October 2004	11 November 2004
November 2004	9 December 2004
December 2004	13 January 2005
January 2005	10 February 2005



CAI IMPLEMENTATION

In October 2003, the ABS began the progressive implementation of computer assisted interviewing (CAI) into the LFS. Under CAI, interviewers record responses directly onto an electronic questionnaire in a laptop computer.

For the period October 2003 to January 2004 the CAI method was used on a random 10% sub-sample of survey interviews. The remaining 90% of interviews each month were conducted using the traditional 'pen and paper' method.

The sub-sample of survey interviews conducted using the CAI method was increased to 40% in February 2004 in New South Wales, Victoria, South Australia and the Australian Capital Territory, and remained at 40% in March 2004. In the remaining states and the Northern Territory, the proportion of interviews using the CAI method stayed at 10% for February and March 2004. The CAI method was used for 40% of interviews for all states and territories in April and May 2004. This was increased to 70% in June 2004, and remained at that level in July 2004. From August 2004 all LFS interviews will be conducted using the CAI method.

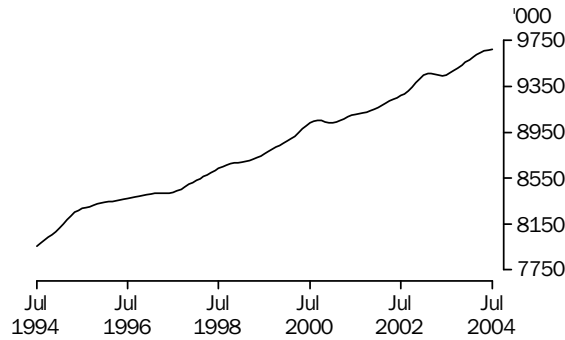
Implementation of the CAI interviewing method has not affected published estimates in any meaningful way. Nonetheless, the ABS is continuing to monitor the situation carefully by conducting a range of analyses on each month's data. These analyses have confirmed that, to date, the change in interview method has not materially affected the aggregate estimates for any month. Users will continue to be informed of the progress of CAI implementation, including the results of further analyses, through updates in this publication.

Dennis Trewin
Australian Statistician

PRINCIPAL LABOUR FORCE SERIES TREND ESTIMATES

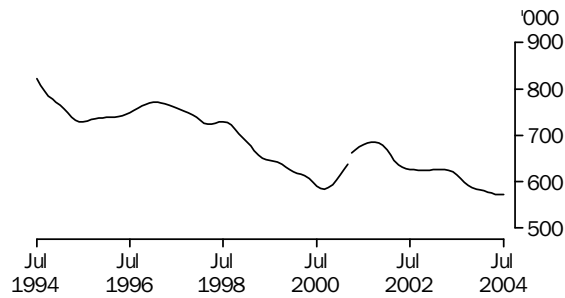
EMPLOYED PERSONS

The trend estimate of employed persons generally rose from a low of 7,637,500 in December 1992 to 9,054,600 in September 2000. The trend estimate then fell slightly to 9,033,600 in January 2001, before rising to 9,465,300 in March 2003. The trend estimate then fell for three months, before rising to stand at 9,672,200 in July 2004.



UNEMPLOYED PERSONS

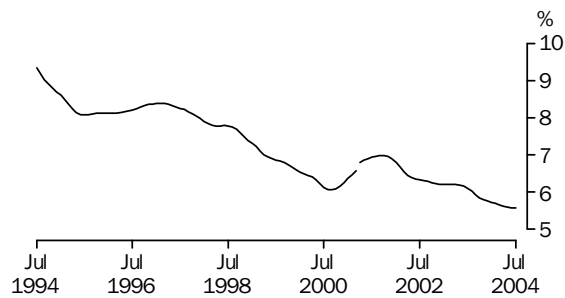
The trend estimate of unemployed persons fell rapidly from 920,800 in September 1993 to 728,200 in July 1995. The trend estimate then rose to 771,500 in February 1997, before falling to 584,000 in September 2000. After rising to 685,700 in October 2001, the trend estimate has generally fallen to stand at 571,700 in July 2004.



Series break at April 2001; see paragraph 12 of Explanatory Notes.

UNEMPLOYMENT RATE

The trend unemployment rate fell rapidly from 10.7% in August 1993 to 8.1% in July 1995. The trend estimate then rose slowly, reaching 8.4% in February 1997, before falling to 6.1% in September 2000. After rising to 7.0% in October 2001, the trend estimate has generally fallen to stand at 5.6% in July 2004.



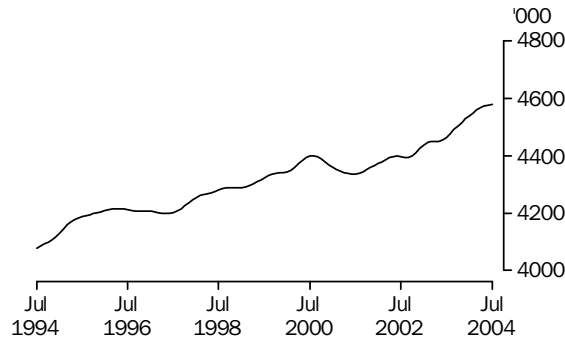
Series break at April 2001; see paragraph 12 of Explanatory Notes.

EMPLOYED PERSONS TREND ESTIMATES

MALES EMPLOYED FULL TIME

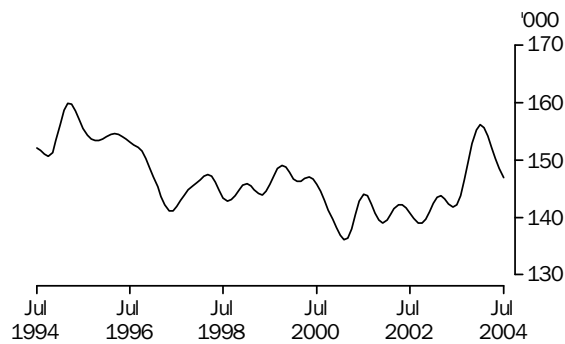
TOTAL

From a low of 3,939,500 in November 1992, the trend estimate for males employed full time rose to 4,216,000 in April 1996. After remaining stable for a year, the trend then rose to 4,400,900 in August 2000. The trend then fell to 4,337,000 in June 2001, before generally rising to stand at 4,578,500 in July 2004.



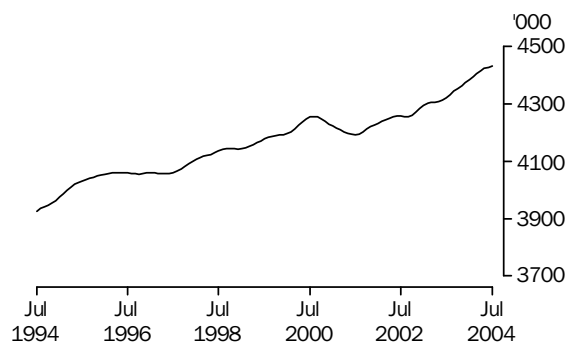
MALES AGED 15-19

Although fluctuating, the trend estimate of males aged 15 to 19 employed full time generally decreased through the decade from 159,900 in March 1995 to 141,700 in June 2003. The trend then rose to 156,200 in January 2004 before falling to stand at 147,000 in July 2004.



MALES AGED 20 AND OVER

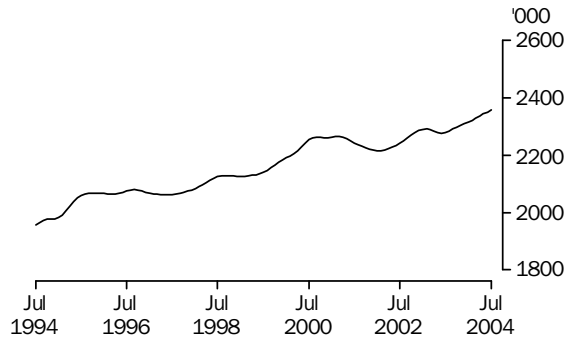
Apart from a flat period between mid 1995 and mid 1997, the trend estimate of males aged 20 and over employed full time rose steadily, from 3,787,600 in December 1992 to 4,256,300 in August 2000. The trend then fell to 4,193,000 in July 2001, before generally rising to stand at 4,431,500 in July 2004.



FEMALES EMPLOYED FULL TIME

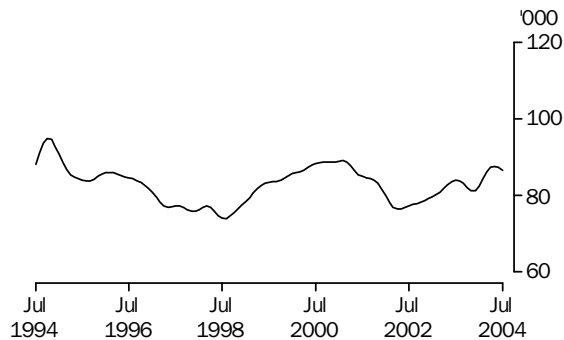
TOTAL

The trend estimate of females employed full time generally rose from 1,865,500 in August 1992 to 2,266,300 in March 2001. The trend then decreased to 2,216,200 in February 2002, before generally rising to stand at 2,357,700 in July 2004.



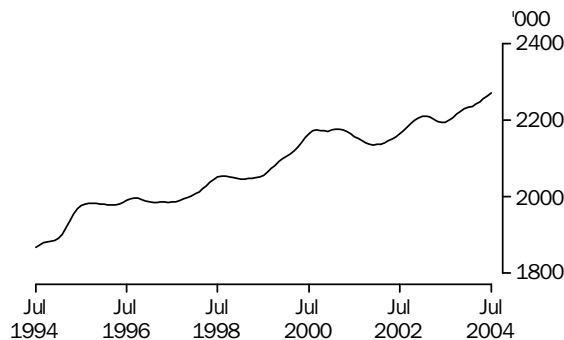
FEMALES AGED 15-19

The trend estimate of females aged 15 to 19 employed full time fell from 95,000 in October 1994 to 74,000 in August 1998. The trend then rose to 89,100 in February 2001, before falling to 76,400 in April 2002. Although fluctuating over the last twelve months, the trend has increased since April 2002 to stand at 86,500 in July 2004.



FEMALES AGED 20 AND OVER

The trend estimate of females aged 20 and over employed full time, while remaining steady for a two year period in the mid 1990s, generally increased from 1,770,900 in August 1992 to 2,177,600 in March 2001. The trend then fell to 2,136,300 in December 2001, before generally increasing to stand at 2,271,200 in July 2004.



LABOUR FORCE STATUS (AGED 15 & OVER): Trend

	EMPLOYED			UNEMPLOYED		Labour force	UNEMPLOYMENT RATE		Participation rate
	Full time	Part time	Total	Looking for f/t work	Total		Looking for f/t work	Total	
	'000	'000	'000	'000	'000		'000	%	
MALES									
July 2001	4 337.0	719.3	5 056.4	324.9	390.9	5 447.3	7.0	7.2	72.1
July 2002	4 398.1	759.0	5 157.0	290.1	353.8	5 510.8	6.2	6.4	71.8
2003									
July	4 463.4	765.3	5 228.6	276.5	336.6	5 565.3	5.8	6.0	71.4
August	4 476.6	767.2	5 243.8	270.6	329.3	5 573.2	5.7	5.9	71.4
September	4 490.8	771.9	5 262.8	264.3	321.6	5 584.4	5.6	5.8	71.4
October	4 503.8	778.3	5 282.1	259.0	315.3	5 597.4	5.4	5.6	71.5
November	4 516.0	784.2	5 300.2	255.4	311.6	5 611.8	5.4	5.6	71.6
December	4 528.2	788.2	5 316.4	253.8	310.3	5 626.7	5.3	5.5	71.7
2004									
January	4 540.0	790.0	5 330.0	253.9	310.9	5 640.9	5.3	5.5	71.8
February	4 551.1	789.5	5 340.5	254.8	312.1	5 652.6	5.3	5.5	71.8
March	4 560.7	787.7	5 348.4	255.8	313.0	5 661.4	5.3	5.5	71.8
April	4 568.1	786.3	5 354.4	256.2	313.2	5 667.6	5.3	5.5	71.8
May	4 573.4	785.5	5 358.9	255.9	312.8	5 671.6	5.3	5.5	71.8
June	4 576.9	785.0	5 361.9	255.3	312.1	5 674.0	5.3	5.5	71.7
July	4 578.5	785.4	5 363.8	254.5	311.3	5 675.2	5.3	5.5	71.7
FEMALES									
July 2001	2 242.8	1 806.2	4 049.0	185.0	289.0	4 337.9	7.6	6.7	55.3
July 2002	2 242.5	1 868.5	4 111.0	172.2	271.9	4 382.9	7.1	6.2	55.1
2003									
July	2 279.0	1 941.9	4 220.9	180.0	277.9	4 498.8	7.3	6.2	55.7
August	2 283.9	1 938.8	4 222.8	178.2	277.1	4 499.8	7.2	6.2	55.7
September	2 291.0	1 934.8	4 225.8	176.5	276.5	4 502.3	7.2	6.1	55.6
October	2 298.2	1 931.0	4 229.2	174.9	276.1	4 505.3	7.1	6.1	55.6
November	2 305.6	1 929.2	4 234.8	173.4	275.2	4 510.0	7.0	6.1	55.6
December	2 311.5	1 931.5	4 243.1	172.3	273.9	4 516.9	6.9	6.1	55.6
2004									
January	2 316.3	1 937.0	4 253.4	170.7	271.4	4 524.7	6.9	6.0	55.6
February	2 321.7	1 943.6	4 265.3	168.9	268.0	4 533.3	6.8	5.9	55.6
March	2 328.2	1 949.7	4 277.9	167.2	264.6	4 542.4	6.7	5.8	55.7
April	2 335.9	1 953.6	4 289.5	165.8	261.7	4 551.2	6.6	5.8	55.7
May	2 344.0	1 954.4	4 298.4	165.1	260.1	4 558.5	6.6	5.7	55.7
June	2 351.4	1 953.0	4 304.4	165.2	259.8	4 564.2	6.6	5.7	55.7
July	2 357.7	1 950.6	4 308.3	165.8	260.4	4 568.7	6.6	5.7	55.8
PERSONS									
July 2001	6 579.8	2 525.5	9 105.4	509.8	679.8	9 785.2	7.2	6.9	63.6
July 2002	6 640.5	2 627.5	9 268.0	462.3	625.7	9 893.7	6.5	6.3	63.3
2003									
July	6 742.4	2 707.2	9 449.5	456.5	614.5	10 064.1	6.3	6.1	63.4
August	6 760.6	2 706.1	9 466.6	448.8	606.4	10 073.0	6.2	6.0	63.4
September	6 781.8	2 706.7	9 488.6	440.8	598.1	10 086.7	6.1	5.9	63.4
October	6 802.0	2 709.3	9 511.3	433.9	591.4	10 102.7	6.0	5.9	63.4
November	6 821.6	2 713.4	9 535.0	428.9	586.8	10 121.8	5.9	5.8	63.4
December	6 839.7	2 719.7	9 559.4	426.1	584.2	10 143.7	5.9	5.8	63.5
2004									
January	6 856.4	2 727.0	9 583.3	424.6	582.2	10 165.6	5.8	5.7	63.5
February	6 872.7	2 733.1	9 605.8	423.7	580.1	10 186.0	5.8	5.7	63.6
March	6 888.9	2 737.4	9 626.3	423.0	577.6	10 203.9	5.8	5.7	63.6
April	6 904.0	2 739.8	9 643.8	422.0	574.9	10 218.8	5.8	5.6	63.6
May	6 917.4	2 739.9	9 657.2	421.0	572.9	10 230.1	5.7	5.6	63.6
June	6 928.3	2 738.0	9 666.3	420.5	571.9	10 238.2	5.7	5.6	63.6
July	6 936.2	2 736.0	9 672.2	420.4	571.7	10 243.9	5.7	5.6	63.6

LABOUR FORCE STATUS (AGED 15 & OVER): Seasonally Adjusted

	EMPLOYED			UNEMPLOYED			UNEMPLOYMENT RATE		
	Full time	Part time	Total	Looking for f/t work	Total	Labour force	Looking for f/t work	Total	Participation rate
	'000	'000	'000	'000	'000	'000	%	%	%
MALES									
July 2001	4 325.3	734.2	5 059.5	324.5	393.2	5 452.7	7.0	7.2	72.2
July 2002	4 400.0	759.8	5 159.8	290.0	344.7	5 504.6	6.2	6.3	71.7
2003									
July	4 451.7	770.1	5 221.8	279.0	339.9	5 561.7	5.9	6.1	71.3
August	4 483.6	761.6	5 245.2	268.1	326.3	5 571.5	5.6	5.9	71.4
September	4 493.0	769.8	5 262.8	264.0	319.6	5 582.4	5.6	5.7	71.4
October	4 508.4	777.4	5 285.8	264.4	320.5	5 606.3	5.5	5.7	71.6
November	4 518.8	780.8	5 299.6	247.3	303.0	5 602.5	5.2	5.4	71.5
December	4 522.2	800.5	5 322.7	251.1	307.3	5 630.0	5.3	5.5	71.7
2004									
January	4 539.7	791.5	5 331.2	255.0	311.9	5 643.1	5.3	5.5	71.8
February	4 540.9	790.7	5 331.6	259.8	320.4	5 652.0	5.4	5.7	71.8
March	4 566.0	779.2	5 345.2	254.4	309.9	5 655.1	5.3	5.5	71.7
April	4 590.7	784.1	5 374.7	256.1	314.8	5 689.5	5.3	5.5	72.1
May	4 564.5	790.4	5 354.9	257.0	309.1	5 664.0	5.3	5.5	71.7
June	4 568.3	786.4	5 354.6	255.1	315.1	5 669.7	5.3	5.6	71.7
July	4 578.4	784.2	5 362.6	253.0	309.9	5 672.5	5.2	5.5	71.6
FEMALES									
July 2001	2 213.9	1 827.8	4 041.7	184.9	284.5	4 326.2	7.7	6.6	55.2
July 2002	2 230.9	1 876.8	4 107.7	166.3	268.1	4 375.8	6.9	6.1	55.0
2003									
July	2 279.7	1 929.0	4 208.7	180.8	282.0	4 490.7	7.3	6.3	55.6
August	2 277.6	1 940.3	4 218.0	175.0	277.4	4 495.3	7.1	6.2	55.6
September	2 293.3	1 924.1	4 217.4	182.5	279.6	4 497.0	7.4	6.2	55.6
October	2 299.5	1 944.4	4 243.8	168.8	267.8	4 511.7	6.8	5.9	55.7
November	2 307.8	1 935.1	4 242.9	174.0	277.1	4 520.0	7.0	6.1	55.7
December	2 315.4	1 927.6	4 242.9	173.5	276.8	4 519.7	7.0	6.1	55.6
2004									
January	2 323.3	1 920.0	4 243.3	169.6	270.2	4 513.5	6.8	6.0	55.5
February	2 307.6	1 933.9	4 241.5	172.7	274.8	4 516.3	7.0	6.1	55.4
March	2 322.6	1 965.5	4 288.1	165.4	260.8	4 548.8	6.6	5.7	55.7
April	2 349.8	1 970.7	4 320.5	167.6	260.5	4 581.0	6.7	5.7	56.1
May	2 330.7	1 964.6	4 295.3	160.2	254.4	4 549.8	6.4	5.6	55.6
June	2 365.7	1 925.1	4 290.7	160.2	256.8	4 547.6	6.3	5.6	55.5
July	2 355.6	1 948.8	4 304.3	175.1	270.9	4 575.2	6.9	5.9	55.8
PERSONS									
July 2001	6 539.2	2 562.0	9 101.1	509.4	677.8	9 778.9	7.2	6.9	63.5
July 2002	6 630.9	2 636.6	9 267.5	456.3	612.8	9 880.3	6.4	6.2	63.2
2003									
July	6 731.4	2 699.0	9 430.5	459.8	621.9	10 052.4	6.4	6.2	63.3
August	6 761.2	2 701.9	9 463.1	443.1	603.7	10 066.9	6.2	6.0	63.4
September	6 786.3	2 693.9	9 480.1	446.6	599.3	10 079.4	6.2	5.9	63.3
October	6 807.8	2 721.8	9 529.6	433.2	588.3	10 117.9	6.0	5.8	63.5
November	6 826.6	2 715.8	9 542.5	421.4	580.1	10 122.5	5.8	5.7	63.4
December	6 837.6	2 728.1	9 565.6	424.7	584.1	10 149.7	5.8	5.8	63.5
2004									
January	6 863.0	2 711.5	9 574.5	424.6	582.1	10 156.6	5.8	5.7	63.5
February	6 848.6	2 724.5	9 573.1	432.5	595.1	10 168.3	5.9	5.9	63.5
March	6 888.6	2 744.6	9 633.2	419.8	570.7	10 203.9	5.7	5.6	63.6
April	6 940.5	2 754.7	9 695.2	423.7	575.3	10 270.5	5.8	5.6	63.9
May	6 895.2	2 755.1	9 650.3	417.1	563.5	10 213.8	5.7	5.5	63.5
June	6 933.9	2 711.4	9 645.4	415.4	572.0	10 217.3	5.7	5.6	63.5
July	6 933.9	2 733.0	9 666.9	428.2	580.8	10 247.7	5.8	5.7	63.6

LABOUR FORCE STATUS (AGED 15 & OVER): Original

	EMPLOYED			UNEMPLOYED			UNEMPLOYMENT RATE			Participation rate	
	Full time	Part time	Total	Looking for f/t work	Total	Labour force	Not in labour force	Civilian population aged 15 and over	Looking for f/t work		Total
	'000	'000	'000	'000	'000	'000	'000	'000	%		%
MALES											
July 2001	4 332.4	739.9	5 072.3	304.1	363.8	5 436.1	2 116.1	7 552.3	6.6	6.7	72.0
July 2002	4 400.1	768.7	5 168.8	271.6	319.6	5 488.4	2 186.1	7 674.5	5.8	5.8	71.5
2003											
July	4 447.4	780.4	5 227.8	261.3	315.3	5 543.1	2 253.9	7 797.0	5.5	5.7	71.1
August	4 433.1	772.4	5 205.5	257.8	309.3	5 514.8	2 292.1	7 807.0	5.5	5.6	70.6
September	4 522.0	766.8	5 288.8	262.2	321.0	5 609.9	2 206.9	7 816.8	5.5	5.7	71.8
October	4 513.5	790.2	5 303.6	253.9	304.3	5 608.0	2 220.0	7 828.0	5.3	5.4	71.6
November	4 512.0	771.2	5 283.2	235.6	284.1	5 567.3	2 271.9	7 839.2	5.0	5.1	71.0
December	4 605.2	788.1	5 393.2	248.0	306.7	5 699.9	2 150.5	7 850.4	5.1	5.4	72.6
2004											
January	4 546.5	750.2	5 296.7	282.7	343.5	5 640.2	2 220.6	7 860.8	5.9	6.1	71.8
February	4 562.9	760.7	5 323.6	286.5	353.1	5 676.7	2 194.7	7 871.4	5.9	6.2	72.1
March	4 558.2	783.0	5 341.1	256.8	319.5	5 660.6	2 221.1	7 881.8	5.3	5.6	71.8
April	4 543.7	798.9	5 342.6	257.0	320.6	5 663.3	2 228.2	7 891.5	5.4	5.7	71.8
May	4 544.2	801.7	5 345.9	255.5	308.8	5 654.6	2 246.7	7 901.3	5.3	5.5	71.6
June	4 533.0	817.3	5 350.2	252.5	309.6	5 659.8	2 251.2	7 911.0	5.3	5.5	71.5
July	4 571.6	795.3	5 366.9	236.7	287.3	5 654.3	2 269.3	7 923.6	4.9	5.1	71.4
FEMALES											
July 2001	2 231.6	1 825.6	4 057.2	166.8	255.0	4 312.2	3 529.5	7 841.7	7.0	5.9	55.0
July 2002	2 243.1	1 873.1	4 116.3	151.4	241.8	4 358.0	3 592.0	7 950.1	6.3	5.5	54.8
2003											
July	2 289.0	1 922.8	4 211.8	166.1	256.6	4 468.5	3 604.9	8 073.4	6.8	5.7	55.3
August	2 234.8	1 956.1	4 191.0	163.5	259.8	4 450.7	3 632.9	8 083.7	6.8	5.8	55.1
September	2 334.7	1 942.8	4 277.5	179.1	275.2	4 552.8	3 541.2	8 093.9	7.1	6.0	56.2
October	2 296.2	1 952.3	4 248.5	159.1	253.8	4 502.3	3 603.2	8 105.5	6.5	5.6	55.5
November	2 307.6	1 943.9	4 251.5	165.3	256.1	4 507.6	3 609.4	8 117.0	6.7	5.7	55.5
December	2 368.4	1 921.2	4 289.6	178.5	279.5	4 569.1	3 559.5	8 128.6	7.0	6.1	56.2
2004											
January	2 348.2	1 813.3	4 161.5	186.1	286.8	4 448.3	3 690.7	8 139.0	7.3	6.4	54.7
February	2 321.6	1 894.8	4 216.4	196.3	316.5	4 532.9	3 616.7	8 149.6	7.8	7.0	55.6
March	2 318.0	1 967.7	4 285.7	171.9	282.0	4 567.6	3 592.4	8 160.0	6.9	6.2	56.0
April	2 307.6	1 971.3	4 278.9	166.6	262.7	4 541.7	3 627.7	8 169.4	6.7	5.8	55.6
May	2 310.1	1 984.8	4 294.9	159.1	254.9	4 549.7	3 629.0	8 178.7	6.4	5.6	55.6
June	2 326.3	1 978.0	4 304.3	158.1	252.1	4 556.5	3 631.5	8 188.0	6.4	5.5	55.6
July	2 362.6	1 940.8	4 303.4	161.4	247.4	4 550.8	3 649.0	8 199.8	6.4	5.4	55.5
PERSONS											
July 2001	6 563.9	2 565.6	9 129.5	470.9	618.9	9 748.4	5 645.7	15 394.0	6.7	6.3	63.3
July 2002	6 643.2	2 641.8	9 285.0	422.9	561.4	9 846.4	5 778.1	15 624.5	6.0	5.7	63.0
2003											
July	6 736.4	2 703.2	9 439.6	427.4	572.0	10 011.6	5 858.8	15 870.4	6.0	5.7	63.1
August	6 667.9	2 728.5	9 396.5	421.3	569.1	9 965.5	5 925.1	15 890.6	5.9	5.7	62.7
September	6 856.7	2 709.6	9 566.3	441.3	596.3	10 162.6	5 748.1	15 910.7	6.0	5.9	63.9
October	6 809.7	2 742.5	9 552.2	412.9	558.1	10 110.3	5 823.2	15 933.5	5.7	5.5	63.5
November	6 819.6	2 715.1	9 534.8	400.9	540.2	10 074.9	5 881.3	15 956.2	5.6	5.4	63.1
December	6 973.5	2 709.3	9 682.8	426.5	586.2	10 269.0	5 710.0	15 978.9	5.8	5.7	64.3
2004											
January	6 894.7	2 563.5	9 458.2	468.9	630.3	10 088.5	5 911.4	15 999.8	6.4	6.2	63.1
February	6 884.5	2 655.5	9 540.0	482.9	669.6	10 209.6	5 811.4	16 020.9	6.6	6.6	63.7
March	6 876.1	2 750.7	9 626.8	428.7	601.5	10 228.3	5 813.6	16 041.8	5.9	5.9	63.8
April	6 851.4	2 770.2	9 621.6	423.6	583.4	10 204.9	5 855.9	16 060.8	5.8	5.7	63.5
May	6 854.2	2 786.5	9 640.7	414.6	563.6	10 204.3	5 875.7	16 080.0	5.7	5.5	63.5
June	6 859.3	2 795.3	9 654.6	410.7	561.7	10 216.3	5 882.7	16 099.0	5.6	5.5	63.5
July	6 934.2	2 736.2	9 670.4	398.0	534.7	10 205.1	5 918.3	16 123.4	5.4	5.2	63.3

LABOUR FORCE STATUS (AGED 15 & OVER)—New South Wales

	TREND					SEASONALLY ADJUSTED					Civilian population aged 15 and over '000
	Employed full time	Total employed	Total unemployed	Unemployment rate	Participation rate	Employed full time	Total employed	Total unemployed	Unemployment rate	Participation rate	
	'000	'000	'000	%	%	'000	'000	'000	%	%	
MALES											
July 2001	1 474.5	1 709.0	113.2	6.2	71.1	1 467.0	1 710.3	112.7	6.2	71.1	2 564.3
July 2002	1 485.9	1 730.8	113.0	6.1	71.0	1 488.4	1 729.7	112.8	6.1	70.9	2 598.7
2003											
July	1 496.5	1 738.3	110.9	6.0	70.4	1 484.1	1 722.8	114.2	6.2	69.9	2 627.4
August	1 503.0	1 744.0	107.2	5.8	70.4	1 511.0	1 749.0	104.5	5.6	70.5	2 629.7
September	1 509.6	1 752.1	103.0	5.6	70.5	1 509.7	1 747.2	101.5	5.5	70.2	2 632.0
October	1 514.8	1 760.6	99.7	5.4	70.6	1 516.2	1 769.6	100.8	5.4	71.0	2 634.6
November	1 518.2	1 767.9	97.8	5.2	70.7	1 525.2	1 769.8	95.6	5.1	70.7	2 637.3
December	1 520.4	1 773.2	97.3	5.2	70.9	1 513.3	1 770.0	95.8	5.1	70.7	2 639.9
2004											
January	1 521.4	1 776.0	97.8	5.2	70.9	1 522.8	1 779.7	97.3	5.2	71.0	2 642.3
February	1 521.5	1 776.8	98.5	5.2	70.9	1 515.8	1 772.9	101.9	5.4	70.9	2 644.8
March	1 521.1	1 776.8	98.8	5.3	70.9	1 525.8	1 779.8	98.7	5.3	71.0	2 647.1
April	1 519.8	1 776.4	98.8	5.3	70.8	1 524.9	1 776.7	98.7	5.3	70.8	2 649.1
May	1 517.9	1 775.8	98.3	5.2	70.7	1 515.9	1 772.7	98.3	5.3	70.6	2 651.1
June	1 515.6	1 775.0	97.8	5.2	70.6	1 514.8	1 779.1	97.5	5.2	70.7	2 653.1
July	1 512.8	1 773.9	97.1	5.2	70.5	1 508.1	1 770.4	96.3	5.2	70.3	2 656.5
FEMALES											
July 2001	787.0	1 349.9	86.6	6.0	54.1	783.0	1 347.7	81.8	5.7	53.8	2 656.9
July 2002	772.9	1 356.7	86.4	6.0	53.7	771.4	1 366.7	89.7	6.2	54.2	2 686.3
2003											
July	780.6	1 397.6	88.5	6.0	54.7	775.2	1 392.2	91.9	6.2	54.7	2 715.5
August	782.5	1 397.4	88.9	6.0	54.7	783.9	1 393.7	87.1	5.9	54.5	2 717.8
September	785.9	1 397.1	89.1	6.0	54.6	785.8	1 400.2	89.4	6.0	54.8	2 720.1
October	789.8	1 397.3	88.5	6.0	54.6	788.8	1 397.9	88.6	6.0	54.6	2 722.8
November	794.2	1 398.8	87.0	5.9	54.5	794.9	1 403.5	88.7	5.9	54.7	2 725.6
December	798.3	1 401.8	85.2	5.7	54.5	795.9	1 397.7	85.1	5.7	54.3	2 728.3
2004											
January	800.5	1 406.1	83.6	5.6	54.5	806.0	1 401.0	85.8	5.8	54.4	2 730.9
February	800.8	1 410.4	82.8	5.5	54.6	799.8	1 405.2	78.8	5.3	54.3	2 733.5
March	799.4	1 414.0	83.2	5.6	54.7	801.6	1 420.8	79.7	5.3	54.8	2 736.1
April	797.2	1 416.0	84.6	5.6	54.8	800.9	1 427.8	86.1	5.7	55.3	2 738.1
May	795.1	1 416.1	86.5	5.8	54.8	786.0	1 415.4	88.8	5.9	54.9	2 740.1
June	793.3	1 415.1	88.6	5.9	54.8	793.9	1 407.7	87.1	5.8	54.5	2 742.1
July	791.5	1 413.2	90.5	6.0	54.8	794.1	1 408.5	93.2	6.2	54.7	2 745.2
PERSONS											
July 2001	2 261.5	3 058.9	199.8	6.1	62.4	2 250.1	3 058.0	194.5	6.0	62.3	5 221.1
July 2002	2 258.8	3 087.5	199.4	6.1	62.2	2 259.8	3 096.5	202.4	6.1	62.4	5 285.0
2003											
July	2 277.1	3 135.9	199.4	6.0	62.4	2 259.3	3 115.0	206.1	6.2	62.2	5 342.9
August	2 285.5	3 141.3	196.1	5.9	62.4	2 294.9	3 142.7	191.6	5.7	62.4	5 347.5
September	2 295.5	3 149.3	192.2	5.8	62.4	2 295.5	3 147.4	190.9	5.7	62.4	5 352.1
October	2 304.5	3 157.9	188.2	5.6	62.5	2 305.0	3 167.5	189.5	5.6	62.7	5 357.5
November	2 312.5	3 166.7	184.8	5.5	62.5	2 320.0	3 173.3	184.3	5.5	62.6	5 362.9
December	2 318.6	3 175.0	182.5	5.4	62.5	2 309.2	3 167.6	181.0	5.4	62.4	5 368.3
2004											
January	2 321.9	3 182.1	181.3	5.4	62.6	2 328.8	3 180.8	183.2	5.4	62.6	5 373.2
February	2 322.3	3 187.3	181.2	5.4	62.6	2 315.7	3 178.1	180.7	5.4	62.5	5 378.2
March	2 320.5	3 190.8	182.0	5.4	62.7	2 327.4	3 200.7	178.4	5.3	62.8	5 383.2
April	2 317.0	3 192.4	183.4	5.4	62.7	2 325.8	3 204.5	184.8	5.5	62.9	5 387.2
May	2 312.9	3 191.9	184.9	5.5	62.6	2 301.9	3 188.1	187.1	5.5	62.6	5 391.2
June	2 308.9	3 190.1	186.3	5.5	62.6	2 308.7	3 186.7	184.6	5.5	62.5	5 395.2
July	2 304.4	3 187.1	187.6	5.6	62.5	2 302.3	3 178.9	189.5	5.6	62.4	5 401.6

LABOUR FORCE STATUS (AGED 15 & OVER)—Victoria

	TREND					SEASONALLY ADJUSTED					Civilian population aged 15 and over '000
	Employed full time	Total employed	Total unemp-loyed	Unemp-loyment rate	Partici-pation rate	Employed full time	Total employed	Total unemp-loyed	Unemp-loyment rate	Partici-pation rate	
	'000	'000	'000	%	%	'000	'000	'000	%	%	
MALES											
July 2001	1 090.9	1 274.0	87.1	6.4	72.7	1 087.4	1 273.2	88.5	6.5	72.8	1 871.5
July 2002	1 096.3	1 280.4	81.5	6.0	71.7	1 097.0	1 279.8	76.5	5.6	71.4	1 898.6
2003											
July	1 104.9	1 299.3	77.4	5.6	71.4	1 105.8	1 300.3	80.5	5.8	71.6	1 928.7
August	1 107.4	1 304.7	75.2	5.5	71.5	1 108.9	1 303.2	73.0	5.3	71.3	1 931.1
September	1 108.8	1 309.5	73.2	5.3	71.5	1 111.6	1 317.9	72.9	5.2	71.9	1 933.5
October	1 109.3	1 312.9	72.1	5.2	71.5	1 114.7	1 313.1	71.7	5.2	71.5	1 936.6
November	1 110.1	1 315.0	72.2	5.2	71.5	1 104.6	1 311.3	68.4	5.0	71.1	1 939.6
December	1 112.1	1 316.6	73.5	5.3	71.6	1 104.8	1 317.9	73.8	5.3	71.6	1 942.7
2004											
January	1 115.7	1 318.5	75.4	5.4	71.7	1 116.6	1 315.5	79.1	5.7	71.7	1 945.5
February	1 120.3	1 321.1	77.4	5.5	71.8	1 123.9	1 321.4	77.9	5.6	71.8	1 948.2
March	1 125.0	1 324.0	79.0	5.6	71.9	1 124.7	1 321.5	75.8	5.4	71.6	1 951.0
April	1 128.9	1 326.8	80.1	5.7	72.0	1 134.6	1 334.0	82.4	5.8	72.5	1 953.3
May	1 131.6	1 329.1	80.8	5.7	72.1	1 127.9	1 326.8	81.0	5.8	72.0	1 955.7
June	1 133.7	1 331.0	81.3	5.8	72.1	1 132.4	1 329.0	82.0	5.8	72.1	1 958.0
July	1 134.7	1 332.6	81.5	5.8	72.2	1 135.5	1 333.6	80.3	5.7	72.1	1 961.0
FEMALES											
July 2001	558.4	1 007.7	70.1	6.5	54.7	546.5	1 007.0	69.8	6.5	54.6	1 970.7
July 2002	561.2	1 032.2	62.3	5.7	54.8	555.6	1 030.4	56.1	5.2	54.4	1 996.8
2003											
July	555.3	1 047.5	67.4	6.0	55.0	558.2	1 046.0	65.1	5.9	54.8	2 027.2
August	554.8	1 045.7	66.7	6.0	54.8	553.2	1 038.1	66.8	6.0	54.4	2 029.6
September	556.4	1 045.5	66.0	5.9	54.7	553.9	1 047.5	62.6	5.6	54.6	2 032.0
October	559.9	1 047.1	65.9	5.9	54.7	556.5	1 045.9	69.1	6.2	54.8	2 035.0
November	564.3	1 050.8	66.0	5.9	54.8	569.8	1 054.7	65.1	5.8	54.9	2 037.8
December	568.5	1 055.6	66.1	5.9	55.0	568.5	1 053.5	68.0	6.1	55.0	2 040.8
2004											
January	572.7	1 060.2	65.5	5.8	55.1	574.3	1 060.0	62.2	5.5	54.9	2 043.6
February	576.7	1 063.9	64.4	5.7	55.1	578.1	1 063.1	67.6	6.0	55.3	2 046.4
March	580.4	1 066.7	63.2	5.6	55.1	575.5	1 068.9	62.8	5.5	55.2	2 049.2
April	583.8	1 068.8	62.5	5.5	55.1	580.1	1 074.2	65.3	5.7	55.5	2 051.5
May	586.8	1 070.3	62.1	5.5	55.1	592.3	1 066.7	55.3	4.9	54.6	2 053.8
June	589.2	1 071.5	62.2	5.5	55.1	599.5	1 068.1	61.0	5.4	54.9	2 056.1
July	590.5	1 072.0	62.7	5.5	55.1	580.1	1 074.0	68.4	6.0	55.5	2 059.1
PERSONS											
July 2001	1 649.3	2 281.7	157.3	6.4	63.5	1 633.9	2 280.2	158.3	6.5	63.5	3 842.2
July 2002	1 657.5	2 312.6	143.8	5.9	63.1	1 652.6	2 310.2	132.6	5.4	62.7	3 895.4
2003											
July	1 660.2	2 346.8	144.8	5.8	63.0	1 664.0	2 346.3	145.6	5.8	63.0	3 955.9
August	1 662.2	2 350.4	141.9	5.7	62.9	1 662.2	2 341.3	139.9	5.6	62.6	3 960.7
September	1 665.2	2 355.0	139.3	5.6	62.9	1 665.5	2 365.4	135.4	5.4	63.1	3 965.5
October	1 669.2	2 360.0	137.9	5.5	62.9	1 671.2	2 359.0	140.8	5.6	62.9	3 971.5
November	1 674.4	2 365.7	138.2	5.5	63.0	1 674.4	2 366.0	133.5	5.3	62.8	3 977.5
December	1 680.6	2 372.2	139.5	5.6	63.1	1 673.2	2 371.4	141.7	5.6	63.1	3 983.5
2004											
January	1 688.4	2 378.7	140.9	5.6	63.2	1 690.8	2 375.5	141.3	5.6	63.1	3 989.0
February	1 697.1	2 384.9	141.8	5.6	63.3	1 702.0	2 384.5	145.5	5.8	63.3	3 994.6
March	1 705.4	2 390.7	142.2	5.6	63.3	1 700.2	2 390.4	138.7	5.5	63.2	4 000.2
April	1 712.6	2 395.6	142.5	5.6	63.4	1 714.7	2 408.2	147.8	5.8	63.8	4 004.8
May	1 718.4	2 399.4	142.9	5.6	63.4	1 720.2	2 393.5	136.3	5.4	63.1	4 009.5
June	1 722.9	2 402.5	143.5	5.6	63.4	1 731.9	2 397.1	142.9	5.6	63.3	4 014.2
July	1 725.2	2 404.7	144.2	5.7	63.4	1 715.5	2 407.7	148.7	5.8	63.6	4 020.2

	TREND					SEASONALLY ADJUSTED					Civilian population aged 15 and over '000
	Employed full time '000	Total employed '000	Total unemp-loyed '000	Unemp-loyment rate %	Partici-pation rate %	Employed full time '000	Total employed '000	Total unemp-loyed '000	Unemp-loyment rate %	Partici-pation rate %	
MALES											
July 2001	796.8	931.6	90.0	8.8	72.9	796.5	930.2	87.5	8.6	72.6	1 401.8
July 2002	828.4	977.4	72.1	6.9	72.8	827.4	980.1	69.4	6.6	72.8	1 441.2
2003											
July	842.2	992.7	70.0	6.6	71.8	840.1	990.3	71.0	6.7	71.7	1 480.3
August	846.4	996.9	68.7	6.4	71.8	847.9	995.8	69.8	6.6	71.8	1 483.4
September	852.5	1 002.5	66.9	6.3	71.9	852.6	1 003.7	65.7	6.1	71.9	1 486.5
October	860.0	1 008.5	65.3	6.1	72.1	857.3	1 009.0	70.4	6.5	72.5	1 489.7
November	868.0	1 014.3	63.9	5.9	72.2	865.2	1 014.7	58.8	5.5	71.9	1 492.9
December	875.4	1 019.8	63.1	5.8	72.4	881.4	1 021.9	61.0	5.6	72.4	1 496.0
2004											
January	881.3	1 024.8	62.8	5.8	72.5	884.7	1 024.2	61.3	5.6	72.4	1 499.3
February	885.7	1 029.1	62.8	5.8	72.7	883.9	1 028.9	68.0	6.2	73.0	1 502.6
March	888.8	1 033.0	62.9	5.7	72.8	886.3	1 026.8	64.0	5.9	72.4	1 505.9
April	891.4	1 036.4	62.7	5.7	72.8	893.7	1 044.4	61.5	5.6	73.3	1 509.0
May	894.0	1 039.3	62.4	5.7	72.8	893.8	1 041.6	59.1	5.4	72.8	1 512.3
June	896.5	1 041.5	62.1	5.6	72.8	893.4	1 037.4	63.1	5.7	72.6	1 515.5
July	898.9	1 043.2	61.9	5.6	72.8	903.1	1 043.0	63.2	5.7	72.8	1 519.0
FEMALES											
July 2001	411.4	762.9	67.7	8.2	57.4	401.0	767.2	66.7	8.0	57.6	1 448.0
July 2002	424.0	775.5	68.2	8.1	56.9	421.9	766.3	69.4	8.3	56.4	1 481.6
2003											
July	436.6	816.1	61.8	7.0	57.7	434.7	813.7	63.1	7.2	57.6	1 521.8
August	439.6	819.7	60.1	6.8	57.7	437.0	818.9	60.9	6.9	57.7	1 525.2
September	442.2	823.1	58.8	6.7	57.7	452.2	821.9	60.4	6.8	57.7	1 528.6
October	443.9	825.4	58.2	6.6	57.7	438.3	828.1	52.5	6.0	57.5	1 532.0
November	444.7	826.4	58.2	6.6	57.6	442.6	829.4	58.5	6.6	57.8	1 535.5
December	444.9	826.2	58.7	6.6	57.5	448.8	828.0	59.1	6.7	57.6	1 538.9
2004											
January	444.4	825.2	59.3	6.7	57.4	447.9	825.4	61.6	6.9	57.5	1 542.0
February	444.6	825.0	59.3	6.7	57.2	439.9	819.8	59.6	6.8	56.9	1 545.2
March	446.0	826.6	58.5	6.6	57.2	443.3	824.5	59.4	6.7	57.1	1 548.4
April	448.5	829.7	57.1	6.4	57.2	450.7	829.2	57.0	6.4	57.1	1 551.4
May	451.8	833.7	55.6	6.2	57.2	448.2	832.4	54.3	6.1	57.0	1 554.4
June	455.6	837.7	54.2	6.1	57.3	455.1	843.9	54.4	6.1	57.7	1 557.4
July	459.4	841.5	52.9	5.9	57.4	467.2	842.2	52.4	5.9	57.3	1 560.7
PERSONS											
July 2001	1 208.1	1 694.5	157.7	8.5	65.0	1 197.4	1 697.4	154.2	8.3	65.0	2 849.8
July 2002	1 252.4	1 752.9	140.3	7.4	64.8	1 249.3	1 746.3	138.8	7.4	64.5	2 922.8
2003											
July	1 278.8	1 808.8	131.8	6.8	64.6	1 274.8	1 803.9	134.1	6.9	64.6	3 002.1
August	1 286.0	1 816.6	128.7	6.6	64.7	1 285.0	1 814.7	130.8	6.7	64.7	3 008.6
September	1 294.7	1 825.6	125.7	6.4	64.7	1 304.8	1 825.5	126.1	6.5	64.7	3 015.1
October	1 303.9	1 833.9	123.4	6.3	64.8	1 295.7	1 837.1	122.8	6.3	64.9	3 021.6
November	1 312.7	1 840.7	122.1	6.2	64.8	1 307.8	1 844.1	117.4	6.0	64.8	3 028.3
December	1 320.2	1 846.0	121.8	6.2	64.8	1 330.1	1 849.9	120.1	6.1	64.9	3 034.9
2004											
January	1 325.7	1 850.0	122.1	6.2	64.8	1 332.6	1 849.6	122.8	6.2	64.9	3 041.3
February	1 330.2	1 854.2	122.2	6.2	64.8	1 323.8	1 848.7	127.6	6.5	64.8	3 047.9
March	1 334.8	1 859.6	121.4	6.1	64.9	1 329.6	1 851.2	123.4	6.2	64.7	3 054.3
April	1 339.9	1 866.2	119.8	6.0	64.9	1 344.4	1 873.6	118.5	5.9	65.1	3 060.4
May	1 345.9	1 873.0	118.0	5.9	64.9	1 342.0	1 873.9	113.4	5.7	64.8	3 066.7
June	1 352.1	1 879.3	116.3	5.8	65.0	1 348.5	1 881.3	117.5	5.9	65.0	3 072.9
July	1 358.3	1 884.7	114.8	5.7	65.0	1 370.4	1 885.2	115.6	5.8	65.0	3 079.7

	TREND					SEASONALLY ADJUSTED					Civilian population aged 15 and over '000
	Employed full time	Total employed	Total unemployed	Unemployment rate	Participation rate	Employed full time	Total employed	Total unemployed	Unemployment rate	Participation rate	
	'000	'000	'000	%	%	'000	'000	'000	%	%	
MALES											
July 2001	317.5	374.1	34.4	8.4	68.5	315.9	372.4	37.7	9.2	68.8	596.2
July 2002	324.5	384.2	29.4	7.1	68.8	325.1	383.2	29.0	7.0	68.6	601.0
2003											
July	338.9	396.7	27.1	6.4	69.8	340.6	398.4	27.4	6.4	70.2	606.8
August	338.1	396.8	26.7	6.3	69.8	336.7	397.2	25.5	6.0	69.6	607.2
September	336.7	396.7	26.6	6.3	69.7	335.4	395.9	25.5	6.1	69.4	607.6
October	335.3	396.4	26.9	6.3	69.6	335.3	394.4	27.3	6.5	69.3	608.2
November	334.3	396.3	27.3	6.4	69.6	334.6	396.5	27.7	6.5	69.7	608.7
December	334.1	396.3	27.8	6.5	69.6	335.3	398.3	28.7	6.7	70.1	609.3
2004											
January	334.4	396.4	28.1	6.6	69.6	332.1	397.2	27.6	6.5	69.7	609.7
February	334.9	396.7	28.2	6.6	69.6	332.2	394.4	28.2	6.7	69.2	610.2
March	335.4	397.0	28.1	6.6	69.6	340.5	397.7	27.6	6.5	69.6	610.7
April	335.7	397.6	28.1	6.6	69.6	335.4	397.2	28.8	6.8	69.7	611.2
May	335.8	398.3	28.1	6.6	69.7	334.7	397.4	27.9	6.6	69.5	611.7
June	335.7	399.0	28.0	6.6	69.8	336.7	400.8	28.1	6.5	70.1	612.2
July	335.5	399.8	28.0	6.5	69.9	333.8	399.9	27.7	6.5	69.8	612.7
FEMALES											
July 2001	155.0	303.6	21.2	6.5	52.2	156.2	303.5	20.9	6.4	52.1	622.4
July 2002	150.9	310.4	20.6	6.2	52.8	148.9	307.3	20.2	6.2	52.3	626.4
2003											
July	165.2	322.9	20.7	6.0	54.4	167.4	322.4	20.9	6.1	54.4	631.3
August	164.2	322.2	21.1	6.1	54.3	162.8	322.0	20.8	6.1	54.3	631.6
September	162.6	321.1	21.5	6.3	54.2	164.8	322.1	22.1	6.4	54.5	632.0
October	160.4	320.1	22.0	6.4	54.1	160.5	320.8	21.3	6.2	54.1	632.6
November	157.9	319.3	22.4	6.6	54.0	157.8	317.3	22.1	6.5	53.6	633.1
December	155.8	319.0	22.4	6.6	53.9	155.9	319.0	22.3	6.5	53.9	633.6
2004											
January	154.4	319.3	22.1	6.5	53.8	153.4	319.0	23.0	6.7	53.9	634.0
February	154.3	319.8	21.4	6.3	53.8	151.2	318.8	24.1	7.0	54.1	634.4
March	155.2	320.4	20.7	6.1	53.7	156.1	322.1	18.4	5.4	53.6	634.7
April	156.6	320.7	20.2	5.9	53.7	158.8	322.1	18.5	5.4	53.6	635.2
May	158.2	320.8	19.9	5.8	53.6	155.5	320.3	19.6	5.8	53.5	635.6
June	159.6	320.7	19.9	5.8	53.6	161.9	319.1	20.9	6.2	53.5	636.0
July	161.0	320.6	20.0	5.9	53.5	161.2	320.9	21.2	6.2	53.8	636.4
PERSONS											
July 2001	472.5	677.7	55.6	7.6	60.2	472.0	675.9	58.6	8.0	60.3	1 218.7
July 2002	475.4	694.6	50.0	6.7	60.7	474.0	690.5	49.2	6.7	60.3	1 227.4
2003											
July	504.1	719.6	47.8	6.2	62.0	508.0	720.8	48.3	6.3	62.1	1 238.0
August	502.3	719.0	47.8	6.2	61.9	499.5	719.2	46.3	6.1	61.8	1 238.8
September	499.4	717.8	48.2	6.3	61.8	500.2	718.0	47.6	6.2	61.8	1 239.6
October	495.6	716.5	48.9	6.4	61.7	495.8	715.2	48.6	6.4	61.6	1 240.7
November	492.3	715.6	49.7	6.5	61.6	492.5	713.8	49.7	6.5	61.5	1 241.8
December	489.9	715.4	50.2	6.6	61.6	491.2	717.3	51.1	6.6	61.8	1 242.9
2004											
January	488.8	715.7	50.2	6.5	61.6	485.5	716.2	50.6	6.6	61.7	1 243.7
February	489.2	716.5	49.6	6.5	61.6	483.4	713.2	52.4	6.8	61.5	1 244.6
March	490.6	717.4	48.8	6.4	61.5	496.6	719.8	46.0	6.0	61.5	1 245.4
April	492.4	718.3	48.3	6.3	61.5	494.1	719.3	47.3	6.2	61.5	1 246.3
May	494.0	719.0	48.0	6.3	61.5	490.2	717.6	47.5	6.2	61.3	1 247.3
June	495.3	719.7	47.9	6.2	61.5	498.5	719.9	49.0	6.4	61.6	1 248.2
July	496.5	720.4	48.0	6.2	61.5	495.0	720.8	48.9	6.4	61.6	1 249.1

LABOUR FORCE STATUS (AGED 15 & OVER)—Western Australia

	TREND					SEASONALLY ADJUSTED					Civilian population aged 15 and over
	Employed full time	Total employed	Total unemployed	Unemployment rate	Participation rate	Employed full time	Total employed	Total unemployed	Unemployment rate	Participation rate	
	'000	'000	'000	%	%	'000	'000	'000	%	%	'000
MALES											
July 2001	444.7	517.2	42.8	7.6	75.3	446.9	518.8	42.9	7.6	75.5	743.6
July 2002	446.6	529.7	39.2	6.9	75.2	444.7	526.9	39.9	7.0	74.9	756.5
2003											
July	464.5	543.9	34.2	5.9	75.0	462.0	544.4	33.1	5.7	74.9	771.2
August	466.1	544.3	34.3	5.9	74.9	463.9	542.4	33.6	5.8	74.6	772.5
September	468.1	545.3	34.1	5.9	74.9	469.2	544.9	35.9	6.2	75.1	773.8
October	469.6	546.9	33.7	5.8	74.9	469.7	544.0	34.2	5.9	74.6	775.2
November	470.4	548.6	32.9	5.7	74.9	473.4	549.0	33.2	5.7	75.0	776.6
December	470.6	550.6	31.9	5.5	74.9	473.4	555.7	30.7	5.2	75.4	778.0
2004											
January	470.4	552.4	30.8	5.3	74.8	467.7	551.8	31.2	5.3	74.8	779.2
February	470.2	553.5	29.9	5.1	74.7	466.2	550.7	29.1	5.0	74.3	780.5
March	470.4	553.8	29.2	5.0	74.6	468.8	551.4	29.9	5.2	74.4	781.7
April	470.8	553.5	28.5	4.9	74.3	476.8	557.5	27.9	4.8	74.8	783.1
May	471.3	552.8	27.9	4.8	74.0	471.1	557.3	28.5	4.9	74.7	784.4
June	471.6	551.8	27.4	4.7	73.7	470.0	548.7	27.2	4.7	73.3	785.8
July	472.0	550.9	26.8	4.6	73.4	471.1	547.3	26.4	4.6	72.9	787.5
FEMALES											
July 2001	207.5	408.2	30.5	7.0	58.1	207.2	407.9	30.8	7.0	58.1	754.7
July 2002	208.4	415.5	22.7	5.2	57.1	207.5	418.4	21.2	4.8	57.3	767.2
2003											
July	214.1	417.8	27.6	6.2	56.9	215.2	417.4	31.3	7.0	57.3	782.4
August	214.8	417.3	28.3	6.4	56.9	209.5	418.5	28.1	6.3	57.0	783.7
September	215.3	416.9	28.8	6.5	56.8	213.8	410.2	27.4	6.3	55.7	785.1
October	215.6	416.8	29.2	6.5	56.7	218.8	419.9	28.5	6.4	57.0	786.6
November	215.7	417.6	29.3	6.6	56.7	218.5	419.0	29.6	6.6	56.9	788.1
December	215.6	419.3	29.0	6.5	56.8	215.3	419.2	30.8	6.8	57.0	789.5
2004											
January	215.8	422.1	28.5	6.3	57.0	216.2	422.7	27.5	6.1	56.9	790.8
February	216.6	425.3	27.7	6.1	57.2	211.8	420.4	28.5	6.3	56.7	792.1
March	218.3	428.5	26.8	5.9	57.4	216.0	427.9	26.7	5.9	57.3	793.3
April	220.6	431.3	26.0	5.7	57.5	223.0	434.7	25.0	5.4	57.8	794.7
May	222.9	433.3	25.5	5.6	57.6	225.9	439.4	24.6	5.3	58.3	796.1
June	224.7	434.5	25.2	5.5	57.7	227.1	432.5	26.1	5.7	57.5	797.4
July	225.9	435.0	25.2	5.5	57.7	222.0	430.1	25.8	5.7	57.1	799.0
PERSONS											
July 2001	652.2	925.4	73.3	7.3	66.7	654.2	926.7	73.7	7.4	66.8	1 498.3
July 2002	655.0	945.1	61.9	6.1	66.1	652.3	945.3	61.1	6.1	66.1	1 523.7
2003											
July	678.7	961.7	61.8	6.0	65.9	677.2	961.7	64.4	6.3	66.1	1 553.5
August	680.9	961.6	62.6	6.1	65.8	673.4	960.9	61.7	6.0	65.7	1 556.2
September	683.4	962.2	62.9	6.1	65.8	682.9	955.1	63.3	6.2	65.3	1 558.8
October	685.2	963.7	62.9	6.1	65.7	688.5	963.9	62.7	6.1	65.7	1 561.7
November	686.1	966.2	62.2	6.0	65.7	691.9	968.1	62.8	6.1	65.9	1 564.6
December	686.2	969.9	60.9	5.9	65.8	688.7	974.8	61.5	5.9	66.1	1 567.5
2004											
January	686.2	974.4	59.3	5.7	65.8	683.9	974.5	58.7	5.7	65.8	1 570.0
February	686.8	978.8	57.6	5.6	65.9	678.0	971.1	57.6	5.6	65.4	1 572.5
March	688.7	982.3	55.9	5.4	65.9	684.9	979.2	56.6	5.5	65.8	1 575.0
April	691.5	984.7	54.6	5.3	65.9	699.8	992.1	52.9	5.1	66.2	1 577.7
May	694.2	986.1	53.5	5.1	65.8	697.0	996.7	53.1	5.1	66.4	1 580.5
June	696.3	986.3	52.6	5.1	65.6	697.1	981.2	53.3	5.2	65.3	1 583.2
July	697.9	985.9	52.1	5.0	65.5	693.0	977.3	52.2	5.1	64.9	1 586.5

LABOUR FORCE STATUS (AGED 15 & OVER)—Tasmania

	TREND					SEASONALLY ADJUSTED					Civilian population aged 15 and over
	Employed full time	Total employed	Total unemployed	Unemployment rate	Participation rate	Employed full time	Total employed	Total unemployed	Unemployment rate	Participation rate	
	'000	'000	'000	%	%	'000	'000	'000	%	%	
MALES											
July 2001	94.2	109.3	12.6	10.3	67.1	94.2	109.3	12.6	10.3	67.1	181.7
July 2002	93.4	109.1	11.5	9.5	65.9	92.2	107.8	11.9	10.0	65.4	183.0
2003											
July	96.7	113.3	10.0	8.1	66.5	97.0	113.9	8.1	6.6	65.8	185.4
August	97.0	113.5	9.8	7.9	66.4	97.4	113.8	10.1	8.2	66.8	185.6
September	97.3	113.6	9.7	7.9	66.4	97.2	113.5	9.6	7.8	66.2	185.8
October	97.5	113.8	9.7	7.8	66.3	97.3	114.2	10.2	8.2	66.8	186.1
November	97.9	114.1	9.6	7.8	66.4	98.1	113.7	10.5	8.4	66.7	186.3
December	98.3	114.6	9.5	7.7	66.5	97.1	113.6	8.8	7.2	65.6	186.6
2004											
January	98.7	115.3	9.4	7.5	66.7	100.2	115.3	9.1	7.3	66.6	186.9
February	99.2	116.0	9.2	7.4	66.9	98.9	116.1	9.3	7.4	67.0	187.1
March	99.7	116.7	9.2	7.3	67.2	99.3	117.6	9.5	7.5	67.8	187.4
April	100.3	117.2	9.3	7.3	67.4	100.1	117.4	9.3	7.4	67.6	187.6
May	100.9	117.5	9.4	7.4	67.6	100.7	117.1	8.5	6.8	66.9	187.8
June	101.5	117.8	9.5	7.5	67.7	101.9	117.6	10.2	8.0	67.9	188.1
July	101.9	117.9	9.6	7.6	67.7	102.5	117.9	9.7	7.6	67.8	188.3
FEMALES											
July 2001	43.4	88.7	7.3	7.6	50.2	42.6	88.3	7.5	7.8	50.1	191.1
July 2002	42.2	89.4	7.5	7.7	50.4	41.4	89.5	8.1	8.3	50.7	192.3
2003											
July	46.9	93.5	6.6	6.6	51.4	47.5	92.7	6.6	6.6	51.0	194.7
August	47.4	94.2	6.3	6.3	51.5	47.5	95.0	6.1	6.0	51.9	195.0
September	47.7	94.8	6.1	6.1	51.7	47.8	95.1	5.9	5.9	51.8	195.2
October	47.6	95.2	6.1	6.0	51.8	47.6	95.8	5.9	5.8	52.1	195.5
November	47.4	95.4	6.1	6.0	51.8	46.9	95.1	6.2	6.1	51.7	195.7
December	46.9	95.3	6.2	6.1	51.8	47.7	94.7	6.6	6.6	51.7	196.0
2004											
January	46.3	95.1	6.2	6.1	51.7	47.0	95.9	5.7	5.6	51.8	196.2
February	46.0	95.0	6.2	6.1	51.5	44.6	94.3	6.6	6.5	51.4	196.4
March	46.0	95.0	6.2	6.1	51.4	45.9	95.7	6.0	5.9	51.7	196.7
April	46.3	95.1	6.2	6.1	51.4	46.4	95.1	5.9	5.9	51.3	196.9
May	46.9	95.3	6.1	6.1	51.5	45.7	94.2	6.6	6.5	51.1	197.1
June	47.5	95.6	6.1	6.0	51.6	48.8	95.7	5.8	5.7	51.4	197.3
July	48.3	95.9	6.2	6.0	51.7	49.1	97.0	6.2	6.0	52.3	197.6
PERSONS											
July 2001	137.6	198.0	19.9	9.1	58.4	136.8	197.6	20.0	9.2	58.4	372.8
July 2002	135.6	198.5	19.0	8.7	58.0	133.6	197.3	20.0	9.2	57.9	375.3
2003											
July	143.6	206.8	16.6	7.4	58.8	144.6	206.6	14.6	6.6	58.2	380.1
August	144.4	207.7	16.1	7.2	58.8	144.9	208.8	16.2	7.2	59.1	380.5
September	144.9	208.4	15.8	7.1	58.8	145.0	208.6	15.5	6.9	58.8	381.0
October	145.2	208.9	15.8	7.0	58.9	144.9	210.0	16.1	7.1	59.3	381.5
November	145.2	209.4	15.7	7.0	58.9	145.0	208.8	16.7	7.4	59.0	382.1
December	145.1	209.9	15.7	7.0	59.0	144.9	208.3	15.4	6.9	58.5	382.6
2004											
January	145.0	210.4	15.6	6.9	59.0	147.2	211.2	14.9	6.6	59.0	383.0
February	145.2	211.0	15.4	6.8	59.0	143.5	210.4	15.9	7.0	59.0	383.5
March	145.7	211.7	15.4	6.8	59.1	145.2	213.2	15.5	6.8	59.6	384.0
April	146.6	212.3	15.4	6.8	59.2	146.5	212.5	15.2	6.7	59.2	384.5
May	147.8	212.9	15.5	6.8	59.3	146.4	211.3	15.1	6.7	58.8	384.9
June	149.1	213.4	15.7	6.8	59.4	150.7	213.3	16.0	7.0	59.5	385.4
July	150.2	213.7	15.8	6.9	59.5	151.6	214.9	16.0	6.9	59.8	385.8

	TREND					Civilian population aged 15 and over
	Employed full time	Total employed	Total unemployed	Unemployment rate	Participation rate	
	'000	'000	'000	%	%	
MALES						
July 2001	44.2	53.5	4.5	7.7	79.3	73.1
July 2002	44.9	55.2	2.9	5.0	79.1	73.5
2003						
July	44.0	53.7	3.1	5.5	76.9	73.8
August	43.7	53.5	2.9	5.2	76.5	73.9
September	43.5	53.5	2.8	5.0	76.3	74.0
October	43.3	53.7	2.8	4.9	76.4	73.9
November	43.4	53.8	2.7	4.7	76.5	73.8
December	43.6	53.9	2.6	4.5	76.6	73.7
2004						
January	43.9	54.0	2.4	4.3	76.5	73.7
February	44.0	53.8	2.4	4.3	76.3	73.7
March	44.0	53.4	2.6	4.6	75.9	73.7
April	43.8	52.8	2.9	5.2	75.4	73.8
May	43.5	52.2	3.2	5.9	75.0	73.9
June	43.2	51.6	3.7	6.6	74.7	73.9
July	42.9	51.0	4.0	7.4	74.4	74.1
FEMALES						
July 2001	29.9	44.1	3.3	7.1	68.6	69.1
July 2002	29.9	44.7	1.9	4.1	67.3	69.2
2003						
July	28.4	41.0	3.0	6.9	63.5	69.3
August	28.3	40.9	2.9	6.6	63.2	69.3
September	28.2	41.1	2.8	6.3	63.3	69.3
October	28.3	41.6	2.6	5.9	63.9	69.3
November	28.5	42.4	2.5	5.6	64.7	69.4
December	28.7	43.1	2.4	5.3	65.5	69.4
2004						
January	28.9	43.7	2.3	5.0	66.2	69.5
February	29.2	44.0	2.2	4.9	66.6	69.5
March	29.4	44.2	2.3	5.0	66.8	69.6
April	29.6	44.2	2.4	5.2	67.0	69.6
May	29.7	44.3	2.5	5.4	67.1	69.7
June	29.7	44.3	2.6	5.6	67.2	69.8
July	29.8	44.1	2.7	5.8	67.2	69.8
PERSONS						
July 2001	74.1	97.6	7.8	7.4	74.1	142.2
July 2002	74.8	99.9	4.8	4.6	73.4	142.7
2003						
July	72.3	94.7	6.1	6.1	70.4	143.0
August	71.9	94.4	5.8	5.8	70.0	143.2
September	71.7	94.7	5.6	5.6	70.0	143.3
October	71.6	95.3	5.4	5.3	70.3	143.2
November	71.9	96.2	5.2	5.1	70.8	143.2
December	72.3	97.0	5.0	4.9	71.2	143.1
2004						
January	72.8	97.6	4.7	4.6	71.5	143.2
February	73.2	97.8	4.7	4.6	71.6	143.2
March	73.4	97.6	4.9	4.8	71.5	143.3
April	73.4	97.0	5.3	5.2	71.3	143.4
May	73.2	96.4	5.8	5.6	71.2	143.6
June	73.0	95.8	6.3	6.1	71.0	143.7
July	72.7	95.2	6.8	6.6	70.9	143.9

	TREND					Civilian population aged 15 and over
	Employed full time	Total employed	Total unemployed	Unemployment rate	Participation rate	
	'000	'000	'000	%	%	
MALES						
July 2001	73.7	87.7	6.2	6.6	78.1	120.2
July 2002	77.4	90.5	4.6	4.8	77.9	122.0
2003						
July	74.7	90.7	4.0	4.3	76.7	123.5
August	74.8	90.7	4.0	4.2	76.7	123.6
September	75.0	90.9	4.0	4.2	76.7	123.7
October	75.2	91.2	3.9	4.1	76.8	123.8
November	75.4	91.6	3.9	4.1	77.1	124.0
December	75.5	92.1	3.9	4.1	77.4	124.1
2004						
January	75.7	92.4	4.0	4.1	77.6	124.2
February	75.9	92.7	4.0	4.1	77.8	124.2
March	76.2	92.8	3.9	4.0	77.7	124.3
April	76.5	92.7	3.8	3.9	77.6	124.3
May	76.7	92.6	3.6	3.7	77.4	124.4
June	77.0	92.5	3.4	3.6	77.1	124.4
July	77.2	92.4	3.3	3.4	76.9	124.5
FEMALES						
July 2001	51.1	81.9	3.6	4.2	66.4	128.8
July 2002	53.8	85.2	3.6	4.0	68.2	130.2
2003						
July	52.2	83.1	3.6	4.2	66.0	131.4
August	52.3	83.3	3.7	4.3	66.1	131.5
September	52.4	83.6	3.7	4.2	66.3	131.6
October	52.4	83.9	3.6	4.1	66.4	131.8
November	52.6	84.2	3.4	3.9	66.4	131.9
December	53.0	84.5	3.2	3.7	66.4	132.1
2004						
January	53.3	84.6	3.1	3.5	66.4	132.1
February	53.4	84.7	3.0	3.4	66.4	132.1
March	53.3	84.6	2.9	3.4	66.3	132.1
April	53.0	84.6	2.9	3.3	66.3	132.0
May	52.6	84.4	2.9	3.3	66.2	132.0
June	52.3	84.2	2.9	3.4	66.1	131.9
July	52.1	84.1	3.0	3.4	66.0	132.0
PERSONS						
July 2001	124.9	169.5	9.8	5.5	72.0	249.0
July 2002	131.2	175.7	8.2	4.4	72.9	252.2
2003						
July	126.9	173.7	7.7	4.2	71.2	254.9
August	127.2	174.0	7.7	4.2	71.2	255.1
September	127.4	174.5	7.7	4.2	71.3	255.3
October	127.6	175.1	7.5	4.1	71.5	255.6
November	128.0	175.9	7.3	4.0	71.6	255.9
December	128.5	176.5	7.2	3.9	71.7	256.2
2004						
January	129.0	177.0	7.1	3.8	71.8	256.3
February	129.3	177.3	7.0	3.8	71.9	256.3
March	129.4	177.4	6.8	3.7	71.9	256.4
April	129.4	177.3	6.7	3.6	71.8	256.4
May	129.3	177.1	6.5	3.6	71.6	256.4
June	129.3	176.8	6.4	3.5	71.4	256.3
July	129.2	176.5	6.3	3.4	71.2	256.6

	EMPLOYED			UNEMPLOYED			UNEMPLOYMENT RATE			Participation rate	
	Full time	Part time	Total	Looking for f/t work	Total	Labour force	Not in labour force	Civilian population aged 15 and over	Looking for f/t work		Total
	'000	'000	'000	'000	'000	'000	'000	'000	%		%
MALES											
New South Wales	1 513.4	266.3	1 779.7	77.9	90.1	1 869.8	786.7	2 656.5	4.9	4.8	70.4
Victoria	1 128.5	204.0	1 332.5	59.8	73.3	1 405.8	555.2	1 961.0	5.0	5.2	71.7
Queensland	903.4	142.8	1 046.2	45.7	58.2	1 104.4	414.7	1 519.0	4.8	5.3	72.7
South Australia	335.0	65.5	400.5	20.1	24.7	425.1	187.6	612.7	5.7	5.8	69.4
Western Australia	467.9	79.2	547.1	18.9	24.3	571.4	216.1	787.5	3.9	4.2	72.6
Tasmania	101.5	16.1	117.6	7.6	9.4	127.0	61.3	188.3	7.0	7.4	67.4
Northern Territory	43.9	7.2	51.0	4.1	4.3	55.4	18.7	74.1	8.5	7.8	74.7
Australian Capital Territory	78.0	14.4	92.4	2.6	3.1	95.4	29.1	124.5	3.2	3.2	76.6
Australia	4 571.6	795.3	5 366.9	236.7	287.3	5 654.3	2 269.3	7 923.6	4.9	5.1	71.4
FEMALES											
New South Wales	802.6	613.9	1 416.5	54.9	83.9	1 500.4	1 244.7	2 745.2	6.4	5.6	54.7
Victoria	582.9	490.5	1 073.4	42.1	63.5	1 136.9	922.2	2 059.1	6.7	5.6	55.2
Queensland	469.0	374.9	843.9	30.5	46.5	890.4	670.3	1 560.7	6.1	5.2	57.1
South Australia	162.6	157.0	319.6	13.6	20.1	339.7	296.8	636.4	7.7	5.9	53.4
Western Australia	216.5	210.4	426.9	12.7	22.1	449.0	350.0	799.0	5.5	4.9	56.2
Tasmania	47.2	48.6	95.8	4.0	6.1	101.9	95.7	197.6	7.8	6.0	51.6
Northern Territory	28.9	15.2	44.1	1.8	2.6	46.6	23.2	69.8	5.8	5.5	66.8
Australian Capital Territory	52.8	30.4	83.3	1.8	2.7	85.9	46.1	132.0	3.2	3.1	65.1
Australia	2 362.6	1 940.8	4 303.4	161.4	247.4	4 550.8	3 649.0	8 199.8	6.4	5.4	55.5
PERSONS											
New South Wales	2 316.0	880.2	3 196.2	132.8	174.0	3 370.2	2 031.4	5 401.6	5.4	5.2	62.4
Victoria	1 711.4	694.5	2 405.9	101.9	136.8	2 542.7	1 477.5	4 020.2	5.6	5.4	63.2
Queensland	1 372.4	517.7	1 890.1	76.2	104.6	1 994.8	1 085.0	3 079.7	5.3	5.2	64.8
South Australia	497.6	222.5	720.1	33.7	44.7	764.8	484.3	1 249.1	6.3	5.8	61.2
Western Australia	684.5	289.5	974.0	31.5	46.4	1 020.4	566.1	1 586.5	4.4	4.5	64.3
Tasmania	148.7	64.6	213.3	11.6	15.5	228.9	157.0	385.8	7.3	6.8	59.3
Northern Territory	72.8	22.3	95.1	5.9	6.9	102.0	41.9	143.9	7.4	6.7	70.9
Australian Capital Territory	130.8	44.8	175.7	4.4	5.7	181.4	75.2	256.6	3.2	3.1	70.7
Australia	6 934.2	2 736.2	9 670.4	398.0	534.7	10 205.1	5 918.3	16 123.4	5.4	5.2	63.3

	EMPLOYED		UNEMPLOYED		UNEMPLOYMENT RATE		Participation rate	Employment to population ratio	Unemployment to population ratio — looking for full-time work
	Full time	Total	Looking for f/t work	Total	Looking for f/t work	Total			
	'000	'000	'000	'000	%	%			
MALES									
July 2001	144.0	340.0	44.9	79.0	23.8	18.9	61.0	49.5	6.5
July 2002	140.8	331.7	35.6	70.3	20.2	17.5	58.1	47.9	5.1
2003									
July	142.2	331.2	36.8	71.0	20.5	17.7	57.4	47.2	5.2
August	143.8	333.7	36.5	70.1	20.3	17.4	57.5	47.5	5.2
September	146.5	338.0	36.0	68.6	19.7	16.9	57.9	48.1	5.1
October	149.7	343.4	35.3	67.1	19.1	16.4	58.3	48.8	5.0
November	152.8	348.7	34.6	66.0	18.5	15.9	58.9	49.5	4.9
December	155.3	352.8	34.4	65.6	18.1	15.7	59.3	50.0	4.9
2004									
January	156.2	355.1	34.6	65.8	18.1	15.6	59.6	50.3	4.9
February	155.7	356.0	35.3	66.5	18.5	15.7	59.8	50.4	5.0
March	154.1	356.1	36.1	67.3	19.0	15.9	59.8	50.3	5.1
April	152.2	355.8	36.5	67.8	19.3	16.0	59.8	50.3	5.2
May	150.2	355.5	36.5	67.7	19.5	16.0	59.7	50.2	5.1
June	148.5	355.3	36.3	67.5	19.6	16.0	59.6	50.1	5.1
July	147.0	355.0	36.0	67.2	19.7	15.9	59.5	50.0	5.1
FEMALES									
July 2001	85.0	335.6	30.5	69.3	26.4	17.1	61.2	50.7	4.6
July 2002	77.3	333.1	27.7	64.6	26.4	16.2	59.8	50.1	4.2
2003									
July	83.9	346.8	25.8	59.1	23.5	14.6	60.3	51.5	3.8
August	83.8	346.7	25.6	59.9	23.4	14.7	60.3	51.5	3.8
September	83.3	346.8	25.9	61.0	23.7	15.0	60.4	51.4	3.8
October	82.1	346.8	26.4	62.2	24.3	15.2	60.5	51.3	3.9
November	81.2	347.4	27.1	63.1	25.1	15.4	60.7	51.3	4.0
December	81.2	349.1	28.0	63.7	25.6	15.4	60.9	51.5	4.1
2004									
January	82.5	351.8	28.9	63.9	25.9	15.4	61.3	51.8	4.3
February	84.5	355.0	29.7	63.9	26.0	15.3	61.7	52.3	4.4
March	86.2	357.7	30.2	64.0	25.9	15.2	62.0	52.6	4.4
April	87.4	359.8	30.3	64.1	25.8	15.1	62.3	52.9	4.5
May	87.7	360.9	30.4	64.6	25.7	15.2	62.5	53.0	4.5
June	87.3	361.0	30.4	65.2	25.8	15.3	62.5	53.0	4.5
July	86.5	360.5	30.4	65.9	26.0	15.5	62.5	52.8	4.5
PERSONS									
July 2001	229.0	675.5	75.4	148.3	24.8	18.0	61.1	50.1	5.6
July 2002	218.1	664.8	63.3	135.0	22.5	16.9	58.9	49.0	4.7
2003									
July	226.1	678.0	62.5	130.2	21.7	16.1	58.8	49.3	4.5
August	227.7	680.4	62.2	130.0	21.5	16.0	58.9	49.5	4.5
September	229.8	684.8	61.9	129.7	21.2	15.9	59.1	49.7	4.5
October	231.8	690.2	61.7	129.3	21.0	15.8	59.4	50.1	4.5
November	234.0	696.2	61.8	129.2	20.9	15.7	59.8	50.4	4.5
December	236.5	701.9	62.4	129.3	20.9	15.6	60.1	50.7	4.5
2004									
January	238.8	706.9	63.6	129.7	21.0	15.5	60.4	51.0	4.6
February	240.2	711.0	65.0	130.5	21.3	15.5	60.7	51.3	4.7
March	240.4	713.8	66.3	131.3	21.6	15.5	60.9	51.5	4.8
April	239.5	715.6	66.8	131.9	21.8	15.6	61.0	51.5	4.8
May	237.9	716.4	66.8	132.3	21.9	15.6	61.1	51.5	4.8
June	235.8	716.3	66.7	132.7	22.0	15.6	61.0	51.5	4.8
July	233.5	715.4	66.4	133.1	22.1	15.7	61.0	51.4	4.8

	EMPLOYED		UNEMPLOYED		UNEMPLOYMENT RATE		Participation rate	Employment to population ratio	Unemployment to population ratio — looking for full-time work
	Full time	Total	Looking for f/t work	Total	Looking for f/t work	Total			
	'000	'000	'000	'000	%	%			
MALES									
July 2001	143.1	340.3	42.3	81.1	22.8	19.3	61.3	49.5	6.2
July 2002	141.0	333.8	36.9	67.6	20.7	16.9	58.0	48.2	5.3
2003									
July	139.7	322.0	35.7	71.5	20.3	18.2	56.1	45.9	5.1
August	142.5	336.9	37.6	70.1	20.9	17.2	58.0	48.0	5.4
September	146.0	337.1	39.0	70.6	21.1	17.3	58.1	48.0	5.6
October	152.3	344.8	36.1	69.7	19.2	16.8	58.9	49.0	5.1
November	153.4	348.8	30.8	60.2	16.7	14.7	58.0	49.5	4.4
December	153.0	354.7	33.8	64.9	18.1	15.5	59.4	50.2	4.8
2004									
January	159.0	357.7	34.7	67.5	17.9	15.9	60.2	50.6	4.9
February	155.2	352.3	36.2	65.7	18.9	15.7	59.1	49.8	5.1
March	155.5	358.9	37.4	70.1	19.4	16.3	60.6	50.7	5.3
April	154.7	354.6	35.5	66.9	18.7	15.9	59.5	50.1	5.0
May	146.4	355.0	37.5	66.4	20.4	15.8	59.5	50.1	5.3
June	145.3	356.0	36.2	70.0	19.9	16.4	60.0	50.2	5.1
July	150.0	354.3	34.8	65.2	18.8	15.5	59.1	49.9	4.9
FEMALES									
July 2001	81.1	335.0	32.0	71.3	28.3	17.5	61.4	50.6	4.8
July 2002	77.9	330.5	24.2	61.3	23.7	15.6	58.9	49.7	3.6
2003									
July	88.5	352.7	22.2	55.7	20.0	13.6	60.6	52.4	3.3
August	81.9	342.2	28.7	65.6	26.0	16.1	60.5	50.8	4.3
September	83.5	344.0	26.7	59.4	24.2	14.7	59.8	51.0	4.0
October	79.1	349.9	24.5	60.9	23.7	14.8	60.8	51.8	3.6
November	83.5	350.9	27.0	63.4	24.4	15.3	61.2	51.8	4.0
December	82.5	346.6	28.0	64.1	25.4	15.6	60.6	51.1	4.1
2004									
January	82.5	348.8	28.9	64.9	25.9	15.7	61.0	51.4	4.3
February	77.3	351.3	30.6	65.1	28.3	15.6	61.3	51.7	4.5
March	84.2	359.8	30.5	62.9	26.6	14.9	62.2	52.9	4.5
April	99.5	368.5	30.4	62.4	23.4	14.5	63.3	54.2	4.5
May	87.8	359.9	30.3	64.9	25.7	15.3	62.4	52.8	4.5
June	84.9	359.5	29.3	64.6	25.6	15.2	62.2	52.7	4.3
July	81.3	355.6	31.1	68.4	27.7	16.1	62.1	52.1	4.6
PERSONS									
July 2001	224.3	675.3	74.3	152.4	24.9	18.4	61.4	50.1	5.5
July 2002	219.0	664.2	61.1	128.9	21.8	16.3	58.4	48.9	4.5
2003									
July	228.2	674.7	57.8	127.2	20.2	15.9	58.3	49.1	4.2
August	224.4	679.2	66.3	135.7	22.8	16.6	59.2	49.4	4.8
September	229.6	681.1	65.7	130.1	22.2	16.0	58.9	49.5	4.8
October	231.4	694.7	60.6	130.6	20.8	15.8	59.8	50.4	4.4
November	236.9	699.6	57.8	123.6	19.6	15.0	59.6	50.6	4.2
December	235.5	701.2	61.8	128.9	20.8	15.5	60.0	50.7	4.5
2004									
January	241.5	706.5	63.6	132.4	20.8	15.8	60.6	51.0	4.6
February	232.6	703.7	66.7	130.8	22.3	15.7	60.2	50.8	4.8
March	239.7	718.7	67.9	132.9	22.1	15.6	61.4	51.8	4.9
April	254.2	723.0	65.9	129.3	20.6	15.2	61.4	52.1	4.7
May	234.2	714.8	67.8	131.3	22.4	15.5	60.9	51.4	4.9
June	230.3	715.5	65.5	134.6	22.1	15.8	61.1	51.4	4.7
July	231.3	709.9	65.9	133.5	22.2	15.8	60.6	51.0	4.7

	EMPLOYED			UNEMPLOYED			UNEMPLOYMENT RATE				Unemployment to population ratio — looking for full-time work	
	Full time	Part time	Total	Looking for f/t work	Total	Labour force	Not in labour force	Civilian population aged 15-19	Looking for f/t work	Total	Participation rate	
	'000	'000	'000	'000	'000	'000	'000	'000	%	%	%	%
NOT ATTENDING FULL-TIME EDUCATION												
Males												
July 2001	135.6	37.4	172.9	31.2	33.7	206.7	23.0	229.7	18.7	16.3	90.0	13.6
July 2002	135.1	43.1	178.2	27.2	30.5	208.6	20.3	229.0	16.8	14.6	91.1	11.9
July 2003	138.7	34.8	173.5	25.2	27.7	201.3	28.3	229.6	15.4	13.8	87.7	11.0
July 2004	142.9	37.8	180.7	25.3	26.8	207.6	25.6	233.2	15.0	12.9	89.0	10.8
Females												
July 2001	76.7	46.2	122.9	23.4	25.9	148.8	29.3	178.2	23.3	17.4	83.5	13.1
July 2002	72.2	56.8	129.0	18.4	20.8	149.8	31.5	181.3	20.3	13.9	82.6	10.1
July 2003	80.3	52.4	132.7	16.2	17.5	150.2	33.4	183.6	16.8	11.7	81.8	8.8
July 2004	75.7	58.5	134.2	21.0	24.3	158.5	29.3	187.9	21.7	15.3	84.4	11.2
Persons												
July 2001	212.3	83.6	295.9	54.6	59.6	355.5	52.3	407.8	20.5	16.8	87.2	13.4
July 2002	207.3	99.8	307.1	45.6	51.3	358.4	51.9	410.3	18.0	14.3	87.4	11.1
July 2003	219.0	87.2	306.2	41.4	45.3	351.5	61.7	413.2	15.9	12.9	85.1	10.0
July 2004	218.6	96.4	315.0	46.3	51.1	366.1	55.0	421.1	17.5	14.0	86.9	11.0
ATTENDING FULL-TIME EDUCATION												
Males												
July 2001	13.7	156.0	169.7	4.8	35.2	205.0	252.5	457.5	26.0	17.2	44.8	1.1
July 2002	12.1	147.0	159.1	*3.6	26.2	185.4	278.3	463.7	*23.1	14.2	40.0	*0.8
July 2003	7.2	145.3	152.4	4.4	31.4	183.9	287.9	471.8	38.1	17.1	39.0	0.9
July 2004	13.6	164.6	178.2	*3.4	26.8	205.0	271.8	476.7	*20.2	13.1	43.0	*0.7
Females												
July 2001	7.3	201.8	209.1	5.3	33.4	242.5	240.8	483.3	42.3	13.8	50.2	1.1
July 2002	8.6	189.2	197.8	*3.4	30.0	227.7	255.8	483.5	*28.2	13.2	47.1	*0.7
July 2003	11.5	203.7	215.1	*3.7	28.5	243.7	246.1	489.8	*24.7	11.7	49.7	*0.8
July 2004	8.7	207.2	215.9	6.9	32.0	247.9	246.4	494.3	44.2	12.9	50.2	1.4
Persons												
July 2001	21.0	357.9	378.9	10.2	68.6	447.4	493.3	940.7	32.6	15.3	47.6	1.1
July 2002	20.7	336.2	356.9	7.0	56.2	413.1	534.1	947.2	25.3	13.6	43.6	0.7
July 2003	18.6	348.9	367.6	8.2	59.9	427.5	534.1	961.6	30.5	14.0	44.5	0.8
July 2004	22.3	371.8	394.1	10.3	58.8	452.9	518.2	971.0	31.6	13.0	46.6	1.1
TOTAL												
Males												
July 2001	149.3	193.4	342.7	36.1	68.9	411.6	275.5	687.1	19.5	16.7	59.9	5.2
July 2002	147.2	190.1	337.3	30.9	56.7	394.0	298.7	692.7	17.3	14.4	56.9	4.5
July 2003	145.9	180.1	326.0	29.6	59.2	385.1	316.2	701.4	16.9	15.4	54.9	4.2
July 2004	156.5	202.4	358.9	28.7	53.6	412.5	297.4	710.0	15.5	13.0	58.1	4.0
Females												
July 2001	84.0	248.0	332.0	28.7	59.3	391.3	270.1	661.4	25.5	15.1	59.2	4.3
July 2002	80.8	246.0	326.7	21.8	50.8	377.5	287.3	664.8	21.2	13.4	56.8	3.3
July 2003	91.8	256.0	347.8	19.9	46.1	393.9	279.6	673.4	17.8	11.7	58.5	3.0
July 2004	84.4	265.7	350.1	27.8	56.3	406.4	275.7	682.1	24.8	13.9	59.6	4.1
Persons												
July 2001	233.3	441.4	674.7	64.8	128.2	802.9	545.6	1 348.5	21.7	16.0	59.5	4.8
July 2002	228.0	436.0	664.0	52.6	107.5	771.5	586.0	1 357.5	18.8	13.9	56.8	3.9
July 2003	237.6	436.2	673.8	49.5	105.2	779.0	595.8	1 374.8	17.2	13.5	56.7	3.6
July 2004	240.9	468.2	709.0	56.5	109.9	818.9	573.2	1 392.1	19.0	13.4	58.8	4.1

* estimate is subject to sampling variability too high for most practical purposes

	EMPLOYED			UNEMPLOYED			UNEMPLOYMENT RATE			Unemployment to population ratio — looking for full-time work		
	Full time	Part time	Total	Looking for f/t work	Total	Labour force	Not in labour force	Civilian population aged 15-19	Looking for f/t work	Total	Participation rate	
	'000	'000	'000	'000	'000	'000	'000	'000	%	%	%	%
NOT ATTENDING FULL-TIME EDUCATION												
New South Wales	72.5	26.8	99.3	17.6	20.4	119.7	16.7	136.4	19.5	17.1	87.8	12.9
Victoria	38.1	18.8	57.0	6.7	6.9	63.9	11.8	75.7	14.9	10.8	84.4	8.8
Queensland	50.2	25.6	75.8	7.9	8.2	84.0	11.2	95.3	13.7	9.8	88.2	8.3
South Australia	17.2	8.0	25.3	5.1	5.8	31.0	4.1	35.2	22.8	18.5	88.3	14.5
Western Australia	29.5	11.0	40.5	5.0	5.6	46.1	5.9	52.1	14.6	12.2	88.6	9.7
Tasmania	6.5	2.7	9.2	1.9	1.9	11.1	1.2	12.3	22.9	17.3	90.1	15.6
Northern Territory	1.3	2.1	3.4	1.6	1.9	5.3	3.6	8.9	55.2	35.6	59.2	18.5
Australian Capital Territory	3.2	1.3	4.6	*0.4	*0.4	5.0	*0.4	5.4	*11.5	*8.4	93.1	*7.9
Australia	218.6	96.4	315.0	46.3	51.1	366.1	55.0	421.1	17.5	14.0	86.9	11.0
ATTENDING FULL-TIME EDUCATION												
New South Wales	7.6	113.8	121.4	*4.0	17.5	138.9	181.2	320.1	*34.3	12.6	43.4	*1.2
Victoria	5.3	99.0	104.3	*0.8	12.3	116.6	146.4	263.0	*13.1	10.5	44.3	*0.3
Queensland	5.5	77.5	83.0	*3.0	13.1	96.1	83.2	179.3	*35.3	13.6	53.6	*1.7
South Australia	*0.9	24.7	25.7	*1.6	6.3	32.0	36.9	69.0	*62.8	19.8	46.4	*2.3
Western Australia	*1.2	40.1	41.3	*0.4	6.8	48.1	46.1	94.2	*25.0	14.2	51.1	*0.4
Tasmania	*0.3	7.7	8.0	*0.2	1.1	9.2	12.9	22.0	*35.3	12.2	41.6	*0.8
Northern Territory	*0.5	1.5	2.0	*0.2	*0.8	2.7	2.5	5.3	*30.8	*27.4	52.1	*4.3
Australian Capital Territory	*0.9	7.5	8.4	*0.1	*0.9	9.2	9.0	18.2	*14.1	*9.4	50.6	*0.8
Australia	22.3	371.8	394.1	10.3	58.8	452.9	518.2	971.0	31.6	13.0	46.6	1.1
TOTAL												
New South Wales	80.1	140.6	220.7	21.5	38.0	258.6	197.9	456.5	21.2	14.7	56.7	4.7
Victoria	43.4	117.8	161.2	7.5	19.2	180.5	158.2	338.6	14.6	10.6	53.3	2.2
Queensland	55.7	103.1	158.8	11.0	21.3	180.1	94.4	274.5	16.4	11.8	65.6	4.0
South Australia	18.2	32.8	51.0	6.7	12.1	63.1	41.1	104.1	26.8	19.2	60.6	6.4
Western Australia	30.7	51.1	81.8	5.4	12.5	94.2	52.0	146.3	15.0	13.2	64.4	3.7
Tasmania	6.8	10.4	17.2	2.1	3.0	20.3	14.1	34.4	23.6	15.0	59.0	6.1
Northern Territory	1.8	3.5	5.4	1.9	2.6	8.0	6.1	14.1	50.4	32.8	56.5	13.2
Australian Capital Territory	4.1	8.8	12.9	*0.6	1.3	14.2	9.4	23.6	*12.1	9.1	60.3	*2.4
Australia	240.9	468.2	709.0	56.5	109.9	818.9	573.2	1 392.1	19.0	13.4	58.8	4.1

* estimate is subject to sampling variability too high for most practical purposes

WHAT IF...? REVISIONS TO TREND ESTIMATES

EFFECT OF NEW SEASONALLY ADJUSTED ESTIMATES ON TREND ESTIMATES

TREND REVISIONS

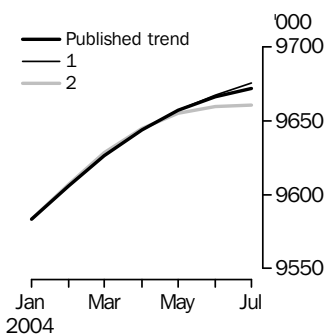
Each time new seasonally adjusted estimates become available, trend estimates are revised. This revision is a combined result of the concurrent seasonal adjustment process and the application of surrogates of the Henderson average to the seasonally adjusted series (see paragraphs 18 to 24 of Explanatory Notes).

The examples in the tables below show two illustrative scenarios and the consequent revisions to previous trend estimates of employment and the unemployment rate. The revisions in the scenarios below are only due to the use of surrogates of the Henderson average, as the impact of revision of the seasonally adjusted estimates can not be estimated in advance.

- (1) The August seasonally adjusted estimate is *higher* than the July estimate by:
0.27% for employment
1.80% for the unemployment rate
- (2) The August seasonally adjusted estimate is *lower* than the July estimate by:
0.27% for employment
1.80% for the unemployment rate

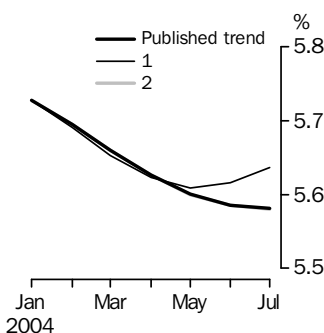
The percentage changes of 0.27% and 1.80% were chosen because they represent the average absolute monthly percentage changes in employment and the unemployment rate respectively.

EMPLOYMENT



	Trend as published	WHAT IF NEXT MONTH'S SEASONALLY ADJUSTED ESTIMATE IS:	
		(1) 9693.0 i.e. rises by 0.27%	(2) 9640.8 i.e. falls by 0.27%
2004			
April	9 643.8	9 643.8	9 644.7
May	9 657.2	9 657.4	9 655.1
June	9 666.3	9 667.6	9 659.9
July	9 672.2	9 675.6	9 661.0

UNEMPLOYMENT RATE



	Trend as published	WHAT IF NEXT MONTH'S SEASONALLY ADJUSTED ESTIMATE IS:	
		(1) 5.8 i.e. rises by 1.80%	(2) 5.6 i.e. falls by 1.80%
2004			
April	5.6	5.6	5.6
May	5.6	5.6	5.6
June	5.6	5.6	5.6
July	5.6	5.6	5.6

EXPLANATORY NOTES

INTRODUCTION

1 This publication contains estimates of the civilian labour force derived from the Labour Force Survey component of the Monthly Population Survey. The full time series for estimates from this publication are also available electronically - see *Labour Force, Australia, Spreadsheets* (cat. no. 6202.0.55.001). More detailed estimates are released one week after this publication in various electronic formats - see *Labour Force, Australia, Detailed - Electronic Delivery* (cat. no. 6291.0.55.001).

CONCEPTS, SOURCES AND METHODS

2 The conceptual framework used in Australia's Labour Force Survey aligns closely with the standards and guidelines set out in Resolutions of International Conferences of Labour Statisticians. Descriptions of the underlying concepts and structure of Australia's labour force statistics, and the sources and methods used in compiling the estimates, are presented in *Labour Statistics: Concepts, Sources and Methods* (cat. no. 6102.0) which is also available on the ABS web site <<http://www.abs.gov.au>> (About Statistics—Concepts and Classifications).

MONTHLY POPULATION SURVEY

3 The population survey is based on a multi-stage area sample of private dwellings (currently about 30,000 houses, flats, etc.) and a list sample of non-private dwellings (hotels, motels, etc.), and covers about 0.45% of the population of Australia. The information is obtained from the occupants of selected dwellings by specially trained interviewers. The information obtained relates to the week before the interview (i.e. the reference week).

4 Households selected for the Labour Force Survey are interviewed each month for 8 months, with one eighth of the sample being replaced each month. The first interview is conducted face-to-face. Subsequent interviews are conducted by telephone (if acceptable to the respondent).

5 The interviews are generally conducted during the two weeks beginning on the Monday between the 6th and 12th of each month. Each year, to deal with operational difficulties involved with collecting and processing the Labour Force Survey around the Christmas and New Year holiday period, interviews for December start four weeks after November interviews start, and January interviews start five weeks after December interviews start. As a result, January interviewing may commence as early as the 8th or as late as the 14th, depending on the year. Occasionally, circumstances that present significant operational difficulties for survey collection can result in a change to the normal pattern for the start of interviewing.

6 Estimates from the Labour Force Survey are published first in this publication 31 days after the commencement of interviews for that month, with the exception of estimates for each December which are published 38 days after the commencement of interviews.

SCOPE OF SURVEY

7 The Labour Force Survey includes all persons aged 15 years and over except members of the permanent defence forces, certain diplomatic personnel of overseas governments customarily excluded from census and estimated population counts, overseas residents in Australia, and members of non-Australian defence forces (and their dependants) stationed in Australia.

COVERAGE

8 In the Labour Force Survey, coverage rules are applied which aim to ensure that each person is associated with only one dwelling, and hence has only one chance of selection. The coverage rules are necessarily a balance between theoretical and operational considerations. Nevertheless, the chance of a person being enumerated at two separate dwellings in the survey is considered to be negligible.

EXPLANATORY NOTES *continued*

POPULATION BENCHMARKS

9 Labour Force Survey estimates are calculated in such a way as to add up to independent estimates of the civilian population aged 15 and over (population benchmarks). From February 2004, labour force estimates have been compiled using benchmarks based on the results of the 2001 Census of Population and Housing. Revisions were made to historical estimates from January 1999 to January 2004.

COMPARABILITY OF SERIES

10 From April 1986, the definition of employed persons was changed to include persons who worked without pay between 1 and 14 hours per week in a family business or on a farm (i.e. contributing family workers). For further information, see paragraphs 36 and 37 of the Explanatory Notes to the February 1987 issue of *Labour Force, Australia* (cat. no. 6203.0).

11 The ABS introduced telephone interviewing into the Labour Force Survey in August 1996. Implementation was phased in for each new sample group from August 1996 to February 1997. During the period of implementation, the new method produced different estimates than would have been obtained under the old methodology. The effect dissipated over the final months of implementation and was no longer discernible from February 1997. The estimates for February 1997 and onwards are directly comparable to estimates for periods prior to August 1996. For further details, see the feature article in the June 1997 issue of *Labour Force, Australia* (cat. no. 6203.0).

12 From April 2001 the Labour Force Survey has been conducted using a redesigned questionnaire containing additional data items and some minor definitional changes. The definition of unemployed persons was changed to include all persons who were waiting to start work and were available to start in the reference week. This change was introduced in February 2004, when historical unit record data were revised from April 2001 to January 2004. This revision created a small trend break at April 2001 in unemployed persons and unemployment rate series. For further details, see *Information Paper: Forthcoming Changes to Labour Force Statistics* (cat. no. 6292.0).

13 Core labour force series were revised in April 2001 for the period April 1986 to March 2001 for the remaining definitional changes introduced with the redesigned questionnaire, to reduce the impact of the changes on labour force series. For further details, see *Information Paper: Implementing the Redesigned Labour Force Survey Questionnaire* (cat. no. 6295.0) and *Information Paper: Questionnaires Used in the Labour Force Survey* (cat. no. 6232.0).

SURVEY SAMPLE REDESIGN

14 The Labour Force Survey sample was last reselected using information collected in the 2001 Census of Population and Housing.

15 The bulk of the new sample was phased in over the period November 2002 to June 2003, with one eighth of this portion of the sample being introduced every month. The remainder of the sample (about 18% of the total), which covers less settled areas of Australia and non-private dwellings was rotated in full for New South Wales, Victoria, Tasmania, Northern Territory and Australian Capital Territory in November 2002, and for Queensland, South Australia and Western Australia in December 2002. Such a pattern of implementation means that any changes to labour force estimates due to differences between the two samples, or any other influences, were spread over the eight months.

16 For further details, see *Information Paper: Labour Force Survey Sample Design* (cat. no. 6269.0) and *Technical Report: New Labour Force Survey sample selections: analysis of the effect on estimates* in the October 2003 issue of *Australian Labour Market Statistics* (cat. no. 6105.0).

EXPLANATORY NOTES *continued*

RELIABILITY OF ESTIMATES

17 Two types of error are possible in an estimate based on a sample survey: sampling error and non-sampling error.

Sampling error occurs because a sample, rather than the entire population, is surveyed. One measure of the likely difference resulting from not including all dwellings in the survey is given by the standard error. There are about two chances in three that a sample estimate will differ by less than one standard error from the figure that would have been obtained if all dwellings had been included in the survey, and about nineteen chances in twenty that the difference will be less than two standard errors. Standard errors of estimates for the latest month and of estimates of movements since the previous month are shown on pages 27 and 28. Standard errors of other estimates and other movements may be determined by using information in *Information Paper: Labour Force Survey Standard Errors* (cat. no. 6298.0) which is available free on the ABS web site <<http://www.abs.gov.au>> (About Statistics—Information Papers).

Non sampling error arises from inaccuracies in collecting, recording and processing the data. Every effort is made to minimise reporting error by the careful design of questionnaires, intensive training and supervision of interviewers, and efficient data processing procedures.

SEASONAL ADJUSTMENT AND TREND ESTIMATION

18 Seasonal adjustment is a means of removing the estimated effects of normal seasonal variation from the series so that the effects of other influences on the series can be more clearly recognised. Seasonal adjustment does not aim to remove the irregular or non-seasonal influences which may be present in any particular month. This means that month-to-month movements of the seasonally adjusted estimates may not be reliable indicators of trend behaviour.

19 The Labour Force Survey uses the concurrent seasonal adjustment method to derive seasonal factors. Concurrent seasonal adjustment uses data up to the current month to estimate seasonal factors for the current and all previous months. This process can result in revisions each month to estimates for earlier periods. However, in most instances, the only noticeable revisions will be to the seasonally adjusted estimates for the previous month and one year prior to the current month.

20 Seasonal adjustment is able to remove the effect of events which occur at the same time in the survey every year. However, there are some events, like holidays, which are not always at the same time in the survey cycle or which are not at the same time across Australia. The effects of these types of events on LFS estimates cannot in all cases be removed, because the pattern of their effects cannot be determined. However, two events which are adjusted for in the seasonally adjusted series are the January interview start date and the timing of Easter.

21 For more information on concurrent seasonal adjustment and survey proximity to holiday periods, see *Information Paper: Forthcoming Changes to Labour Force Statistics* (cat. no. 6292.0).

22 While seasonal factors for the complete time series are estimated each month, they will continue to be reviewed annually at a more detailed level to take into account each additional year's original data. This annual review will not normally result in significant changes to published estimates. The review will be conducted in February each year with the results released in the February issue of this publication.

23 The smoothing of seasonally adjusted series to produce 'trend' series reduces the impact of the irregular component of the seasonally adjusted series. These trend estimates are derived by applying a 13-term Henderson-weighted moving average to all months except the last six. The last six monthly trend estimates are obtained by applying surrogates of the Henderson average to the seasonally adjusted series. Trend estimates are used to analyse the underlying behaviour of a series over time.

EXPLANATORY NOTES *continued*

SEASONAL ADJUSTMENT AND TREND ESTIMATION *continued*

24 While this smoothing technique enables estimates to be produced for the latest month, it does result in revisions in addition to those caused by the revision of seasonally adjusted estimates. Generally, revisions due to the use of surrogates of the Henderson average become smaller, and after 3 months have a negligible impact on the series.

25 Trend estimates are published for the Northern Territory in table 10 and for the Australian Capital Territory in table 11. Unadjusted series for the two territories have shown, historically, a high degree of variability, which can lead to considerable revisions to the seasonally adjusted estimates each month when seasonal factors are estimated. For this reason, seasonally adjusted estimates are not currently published for the two Territories. In addition, caution should be exercised in the interpretation of trend estimates for the two territories, particularly for the three most recent months, where revisions may be relatively large.

26 For further information, see *A Guide to Interpreting Time Series—Monitoring 'Trends': an Overview* (cat. no. 1348.0) or contact the Assistant Director, Time Series Analysis on (02) 6252 6345.

RELATED PUBLICATIONS

27 Users may also wish to refer to *Australian Labour Market Statistics* (cat. no. 6105.0). This publication contains additional tables and a detailed list of related publications. For further information about this publication, please contact the Assistant Director, Labour Market Statistics on (02) 6252 7636.

28 ABS Information about the labour market can be found on the Labour theme page on the ABS web site <<http://www.abs.gov.au>> (Themes—People, Labour), or from ABS Bookshops.

29 Current publications and other products released by the ABS are listed in the *Catalogue of Publications and Products* (cat. no. 1101.0). The Catalogue is available from any ABS office or the ABS web site <<http://www.abs.gov.au>> (Products and Services). The ABS also issues a daily Release Advice on the web site (Information on Releases) which details products to be released in the week ahead.

DATA AVAILABLE ON REQUEST

30 As well as the statistics included in this and related publications, the ABS may have other relevant data available. Inquiries should be made to Craig Blair on (02) 6252 6525 or to any ABS office.

EFFECTS OF ROUNDING

31 Estimates have been rounded and discrepancies may occur between sums of the component items and totals.

32 Estimates of movement shown in this publication are obtained by taking the difference of unrounded estimates. The movement estimate is then rounded to one decimal place. Therefore where a discrepancy occurs between the reported movement and the difference of the rounded estimates, the reported movement will be more accurate.

SYMBOLS AND OTHER USAGES

33 SYMBOLS AND OTHER USAGES
pts percentage points

STANDARD ERRORS

STANDARD ERRORS

The estimates in this publication are based on information gained from the occupants of a sample survey of dwellings. Because the entire population is not surveyed, the published estimates are subject to sampling error. The most common way of quantifying such sampling error is to calculate the standard error for the published estimate or statistic. For more information, see paragraph 17 of the Explanatory Notes.

LEVEL ESTIMATES

To illustrate, let us say the published level estimate for employed persons aged 15 to 19 is 700,000. The calculated standard error in this case is 9,800. The standard error is then used to interpret the level estimate of 700,000. For instance, the standard error of 9,800 indicates that:

- There are approximately two chances in three that the real value falls within the range 690,200 to 709,800 (700,000 + or - 9,800)
- There are approximately nineteen chances in twenty that the real value falls within the range 680,400 to 719,600 (700,000 + or - 19,600).

The real value in this case is the result we would obtain if we could enumerate the total population.

The following table shows the standard errors for this month's level estimates.

										AUSTRALIA										
										Males	Females	Persons								
										NSW	Vic.	Qld	SA	WA	Tas.	NT	ACT			
Aged 15 and over																				
Employed																				
Full time	'000	18.7	14.1	11.3	5.1	5.5	1.9	1.3	1.8	21.8	16.1	29.1								
Part time	'000	10.9	8.9	7.7	3.7	4.1	1.4	0.8	1.1	10.4	14.8	17.1								
Total	'000	22.9	17.1	12.8	5.9	6.1	2.1	1.4	2.1	24.1	21.0	39.0								
Unemployed																				
Looking for f/t work	'000	5.0	3.9	3.6	1.7	1.9	0.7	0.5	0.5	6.5	5.7	7.9								
Looking for p/t work	'000	3.5	2.7	2.4	1.1	1.4	0.5	0.3	0.3	3.7	4.5	5.3								
Total	'000	5.5	4.4	4.1	2.0	2.2	0.8	0.5	0.5	7.0	6.6	8.9								
Labour force	'000	23.7	17.7	13.0	6.0	6.2	2.2	1.4	2.1	25.0	21.7	41.2								
Not in labour force	'000	17.3	13.0	10.3	5.0	5.1	1.9	1.0	1.4	15.8	19.3	25.8								
Unemployment rate																				
Looking for f/t work	pts	0.2	0.2	0.2	0.3	0.3	0.4	0.6	0.3	0.1	0.2	0.1								
Looking for p/t work	pts	0.4	0.4	0.4	0.5	0.5	0.7	1.1	0.6	0.4	0.2	0.2								
Total	pts	0.2	0.2	0.2	0.3	0.2	0.4	0.5	0.3	0.1	0.1	0.1								
Participation rate	pts	0.4	0.4	0.4	0.5	0.4	0.6	1.0	0.8	0.3	0.3	0.3								
Aged 15 - 19																				
Employed																				
Full time	'000	4.3	3.0	3.1	1.4	1.8	0.6	0.3	0.4	5.6	4.5	6.6								
Part time	'000	5.1	4.2	4.0	1.7	2.2	0.7	0.4	0.6	6.2	6.8	8.5								
Total	'000	6.0	4.7	4.8	2.1	2.6	0.8	0.5	0.7	7.6	7.6	9.9								
Unemployed																				
Looking for f/t work	'000	2.7	1.4	1.6	0.9	0.9	0.4	0.3	0.2	2.9	2.8	3.8								
Looking for p/t work	'000	2.4	1.8	1.5	0.8	1.0	0.3	0.2	0.2	2.7	2.9	3.7								
Total	'000	3.4	2.2	2.1	1.2	1.3	0.4	0.4	0.3	3.7	3.8	4.9								
Labour force	'000	6.3	4.9	5.1	2.2	2.8	0.9	0.6	0.7	8.1	8.0	10.5								
Not in labour force	'000	5.7	4.6	3.9	1.9	2.2	0.8	0.5	0.6	7.1	6.9	9.1								
Unemployment rate																				
Looking for f/t work	pts	2.7	2.8	2.4	3.6	2.6	4.1	8.6	4.7	1.5	2.5	1.3								
Looking for p/t work	pts	1.5	1.4	1.3	2.2	1.8	2.3	5.2	2.5	1.2	1.0	0.7								
Total	pts	1.3	1.2	1.2	1.8	1.4	2.1	4.6	2.0	0.9	0.9	0.6								
Participation rate	pts	1.4	1.4	1.8	2.2	1.9	2.6	4.0	3.0	1.1	1.2	0.8								
Unemployment to population ratio — looking for f/t work																				
	pts	0.6	0.4	0.6	0.9	0.6	1.1	2.3	0.9	0.4	0.4	0.3								

STANDARD ERRORS *continued*

MOVEMENT ESTIMATES

The following example illustrates how to use the standard error to interpret a movement estimate. Let us say that one month the published level estimate for females employed part time in Australia is 1,890,000; the next month the published level estimate is 1,900,000. The calculated standard error for the movement estimate is 10,300. The standard error is then used to interpret the published movement estimate of 10,000. For instance, the standard error of 10,300 indicates that:

- There are approximately two chances in three that the real movement between the two months falls within the range -300 to 20,300 (10,000 + or - 10,300)
- There are approximately nineteen chances in twenty that the real movement falls within the range -10,600 to 30,600 (10,000 + or - 20,600).

The following table shows the standard errors for this month's movement estimates.

		AUSTRALIA										
		NSW	Vic.	Qld	SA	WA	Tas.	NT	ACT	Males	Females	Persons
Aged 15 and over												
Employed												
Full time	'000	10.0	7.6	7.0	3.2	3.9	1.3	1.1	1.0	14.2	11.2	16.5
Part time	'000	7.3	5.6	5.1	2.4	2.9	0.9	0.7	0.8	7.7	10.5	11.9
Total	'000	11.1	8.5	7.8	3.6	4.4	1.4	1.2	1.2	15.0	13.9	18.5
Unemployed												
Looking for f/t work	'000	3.8	2.9	2.6	1.3	1.5	0.5	0.4	0.3	5.1	4.3	6.0
Looking for p/t work	'000	2.7	2.1	1.9	0.9	1.1	0.4	0.2	0.2	3.0	3.6	4.2
Total	'000	4.2	3.2	3.0	1.4	1.7	0.6	0.4	0.4	5.5	5.1	6.7
Labour force	'000	11.3	8.7	8.0	3.7	4.5	1.5	1.2	1.2	15.3	14.2	18.9
Not in labour force	'000	9.5	7.2	6.4	3.1	3.7	1.3	0.9	0.9	11.1	13.1	15.6
Unemployment rate												
Looking for f/t work	pts	0.2	0.2	0.2	0.2	0.2	0.3	0.5	0.3	0.1	0.2	0.1
Looking for p/t work	pts	0.3	0.3	0.3	0.4	0.4	0.5	0.9	0.5	0.3	0.2	0.1
Total	pts	0.1	0.1	0.1	0.2	0.2	0.3	0.4	0.2	0.1	0.1	0.1
Participation rate	pts	0.2	0.2	0.3	0.3	0.3	0.4	0.8	0.5	0.2	0.2	0.1
Aged 15 - 19												
Employed												
Full time	'000	3.2	2.2	2.3	1.0	1.4	0.5	0.3	0.3	4.3	3.4	5.0
Part time	'000	4.0	3.1	2.9	1.2	1.7	0.5	0.3	0.5	4.7	5.2	6.4
Total	'000	4.5	3.4	3.3	1.4	1.9	0.6	0.4	0.5	5.7	5.7	7.3
Unemployed												
Looking for f/t work	'000	2.1	1.4	1.4	0.7	0.8	0.3	0.3	0.2	2.5	2.3	3.1
Looking for p/t work	'000	1.9	1.6	1.4	0.7	0.9	0.2	0.2	0.2	2.4	2.4	3.1
Total	'000	2.5	1.9	1.8	0.9	1.0	0.3	0.3	0.3	3.1	3.0	3.9
Labour force	'000	4.8	3.6	3.5	1.5	2.0	0.6	0.5	0.5	6.0	6.0	7.7
Not in labour force	'000	4.4	3.4	2.8	1.3	1.7	0.6	0.4	0.4	5.4	5.2	6.8
Unemployment rate												
Looking for f/t work	pts	2.0	2.6	2.2	3.0	2.3	3.2	7.2	5.4	1.4	2.2	1.1
Looking for p/t work	pts	1.1	1.2	1.2	1.7	1.5	2.2	4.4	1.9	1.0	0.8	0.6
Total	pts	1.0	1.0	1.0	1.4	1.1	1.6	3.8	1.7	0.8	0.7	0.5
Participation rate	pts	1.0	1.1	1.3	1.5	1.4	1.9	3.3	2.2	0.9	0.9	0.6
Unemployment to population ratio — looking for f/t work												
	pts	0.5	0.4	0.5	0.7	0.6	0.9	1.9	0.8	0.3	0.3	0.2

GLOSSARY

Actively looking for work	Includes writing, telephoning or applying in person to an employer for work; answering an advertisement for a job; checking factory noticeboards or the touchscreens at the Centrelink offices; being registered with Centrelink as a jobseeker; checking or registering with any other employment agency; advertising or tendering for work; and contacting friends or relatives.
Attending full-time education	Persons aged 15 to 24 years enrolled at secondary or high school or enrolled as a full time student at a Technical and Further Education (TAFE) college, university, or other educational institution in the reference week.
Attending school	Persons aged 15 to 19 years enrolled at secondary or high school in the reference week.
Attending tertiary educational institution full time	Persons aged 15 to 24 years enrolled full time at a TAFE college, university, or other educational institution in the reference week, except those persons aged 15 to 19 years who were still attending school.
Civilian population aged 15 years and over	All usual residents of Australia aged 15 years and over except members of the permanent defence forces, certain diplomatic personnel of overseas governments customarily excluded from census and estimated population counts, overseas residents in Australia, and members of non-Australian defence forces (and their dependants) stationed in Australia.
Employed	All persons aged 15 years and over who, during the reference week: <ul style="list-style-type: none">■ worked for one hour or more for pay, profit, commission or payment in kind in a job or business, or on a farm (comprising employees, employers and own account workers); or■ worked for one hour or more without pay in a family business or on a farm (i.e. contributing family workers); or■ were employees who had a job but were not at work and were:<ul style="list-style-type: none">■ away from work for less than four weeks up to the end of the reference week; or■ away from work for more than four weeks up to the end of the reference week and received pay for some or all of the four week period to the end of the reference week; or■ away from work as a standard work or shift arrangement; or■ on strike or locked out; or■ on workers' compensation and expected to return to their job; or■ were employers or own account workers, who had a job, business or farm, but were not at work.
Employment to population ratio	For any group, the number of employed persons expressed as a percentage of the civilian population in the same group.
Full-time workers	Employed persons who usually worked 35 hours or more a week (in all jobs) and those who, although usually working less than 35 hours a week, worked 35 hours or more during the reference week.
Labour force	For any group, persons who were employed or unemployed, as defined.
Labour force status	A classification of the civilian population aged 15 years and over into employed, unemployed or not in the labour force, as defined. The definitions conform closely to the international standard definitions adopted by the International Conferences of Labour Statisticians.
Not in labour force	Persons who were not in the categories employed or unemployed as defined.
Participation rate	For any group, the labour force expressed as a percentage of the civilian population aged 15 years and over in the same group.
Part-time workers	Employed persons who usually worked less than 35 hours a week (in all jobs) and either did so during the reference week, or were not at work in the reference week.

GLOSSARY *continued*

Seasonally adjusted series	A time series of estimates with the estimated effects of normal seasonal variation removed. See Explanatory Notes 18 to 22 for more detail.
Trend series	A smoothed seasonally adjusted series of estimates. See Explanatory Notes 23 to 25 for more detail.
Unemployed	Persons aged 15 years and over who were not employed during the reference week, and: <ul style="list-style-type: none">■ had actively looked for full-time or part-time work at any time in the four weeks up to the end of the reference week and were available for work in the reference week; or■ were waiting to start a new job within four weeks from the end of the reference week and could have started in the reference week if the job had been available then.
Unemployed looking for full-time work	Unemployed persons who: <ul style="list-style-type: none">■ actively looked for full-time work; or■ were waiting to start a new full-time job.
Unemployed looking for part-time work	Unemployed persons who: <ul style="list-style-type: none">■ actively looked for part-time work only; or■ were waiting to start a new part-time job.
Unemployment rate	For any group, the number of unemployed persons expressed as a percentage of the labour force in the same group.
Unemployment to population ratio	For any group, the number of unemployed persons expressed as a percentage of the civilian population in the same group.

FOR MORE INFORMATION . . .

- INTERNET* **www.abs.gov.au** the ABS web site is the best place to start for access to summary data from our latest publications, information about the ABS, advice about upcoming releases, our catalogue, and Australia Now—a statistical profile.
- LIBRARY* A range of ABS publications is available from public and tertiary libraries Australia-wide. Contact your nearest library to determine whether it has the ABS statistics you require, or visit our web site for a list of libraries.
- CPI INFOLINE* For current and historical Consumer Price Index data, call 1902 981 074 (call cost 77c per minute).
- DIAL-A-STATISTIC* For the latest figures for National Accounts, Balance of Payments, Labour Force, Average Weekly Earnings, Estimated Resident Population and the Consumer Price Index call 1900 986 400 (call cost 77c per minute).

INFORMATION SERVICE

Data already published that can be provided within five minutes will be free of charge. Our information consultants can also help you to access the full range of ABS information—ABS user pays services can be tailored to your needs, time frame and budget. Publications may be purchased. Specialists are on hand to help you with analytical or methodological advice.

- PHONE* 1300 135 070
- EMAIL* client.services@abs.gov.au
- FAX* 1300 135 211
- POST* Client Services, ABS, GPO Box 796, Sydney NSW 2001

WHY NOT SUBSCRIBE?

ABS subscription services provide regular, convenient and prompt deliveries of selected ABS publications and products as they are released. Email delivery of monthly and quarterly publications is available.

- PHONE* 1300 366 323
- EMAIL* subscriptions@abs.gov.au
- FAX* (03) 9615 7848
- POST* Subscription Services, ABS, GPO Box 2796Y, Melbourne Vic 3001



2620200007043

ISSN 1448 2819

RRP \$22.00